

U. S. NAVAL AUXILIARY AIR STATION

# REAM FIELD



"HELICOPTER CAPITAL OF THE WORLD"



WELCOME ABOARD

## UNOFFICIAL DIRECTORY AND GUIDE — 1967

This is an unofficial publication published by Military Publishers of California, a private firm in no way connected with the Department of the Navy. Opinions expressed by the publishers herein are their own and are not to be considered an official expression by the Department of the Navy. The appearance of advertisements in this publication does not constitute an endorsement by the Department of the Navy of the products or services advertised.



## WITHIN MINUTES of REAM FIELD

STUDIOS – ONE AND TWO BEDROOM

### APARTMENTS

FURNISHED AND UNFURNISHED  
From \$89.00 MONTHLY  
INCLUDING UTILITIES  
CABLE TV



CHILDREN  
WELCOME

### *Woodlawn Gardens*

420 - 3060  
CHULA VISTA  
WOODLAWN & H AVE.

SWIMMING  
POOL

### *Casa Loma*

233 - 0268  
SAN DIEGO  
2865 "A" STREET

ADULT  
LIVING

### *Garden View*

239 - 1492  
SAN DIEGO  
2401 "C" STREET

5511 EL CAJON BLVD. Rm. 206

RENTAL OFFICES  
583 - 4040

SAN DIEGO 92115

## FIRESIDE Homes

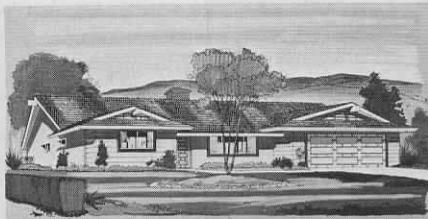
Presents

3 - 4 and 5 BEDROOM HOMES  
FOR FAMILY LIVING

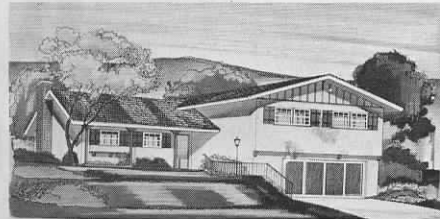
FHA — FHA-IN-SERVICE — VA

FINANCING WITH MINIMUM AND/ OR NO DOWN

2 - 2½ - 3 BATHS



UNIVERSITY CITY 453-3254



583-4040

SAN CARLOS 465-6540

## GUARANTEED REPURCHASE PLAN



## INDEX

Message from the Commanding Officer .....	2
Mission .....	4
History of Ream Field .....	4
Reporting in .....	6
General Information .....	7-11
HC-1 Squadron .....	12
HS-2 Squadron .....	13
HS-4 Squadron .....	14
HS-6 Squadron .....	15
HS-8 Squadron .....	16
HS-10 Squadron .....	17
Area Information .....	18-23
Station Map .....	26
Classified Directory .....	Yellow Section

## U. S. NAVAL AUXILIARY AIR STATION REAM FIELD

# “HELICOPTER CAPITAL OF THE WORLD”

The U.S. Naval Auxiliary Air Station, Ream Field is located approximately fourteen miles south of San Diego within the city limits of the city of Imperial Beach on the southern Boundary, and one-half mile east of the ocean.

Known throughout the Navy as “The Helicopter Capital of the World,” Ream Field is the homeport for all Pacific Fleet Helicopter Squadrons and is the only Navy installation used solely for Fleet helicopters.

The history of Ream Field dates back to 1917 when the Army established “Aviation Field” on the current site. In 1918 it was re-named in honor of Army Major William Roy Ream, the first flying surgeon of the American Army and the first flight surgeon to be killed in an aircraft accident. The Navy commenced using Ream as an outlying practice field in the early 20's. In 1943, the present runways were built and in the following year, construction on the station's buildings commenced.

Shortly after World War II, Ream Field was decommissioned. In 1951 it was recommissioned as an Auxiliary Landing Field; and then, in 1955, it was redesignated a Naval Auxiliary Air Station.

This proud, closely knit station is the homeport of six helicopter squadrons. Ream Field also supports a Naval Air Maintenance Training Group and a Fleet Airborne Electronics Training Unit.

It is important to note that all Navy helicopter squadrons on the West Coast are based at Ream Field.

Largest of the squadrons is Helicopter Combat Support Squadron ONE, HC-1, which operates five different models of helicopters. HC-1 was the first helicopter squadron to be formed in the Navy and is the largest helicopter squadron in the Navy today. While HC-1 does not deploy as a squadron, it deploys detachments throughout the Pacific area, including the aboard attack carriers, ice breakers and, upon special occasions, auxiliaries.

Helicopter Anti-Submarine Squadrons 2, 4, 6, and 8, operate the SH-3A Anti Submarine Helicopter. These squadrons are on a continuing deployment rotation schedule where one squadron is always deployed to the Western Pacific. These squadrons are on constant operational training programs.

HS-10 is a replacement air group squadron training student pilots prior to their assignments to other Ream Field A.S.W. Squadrons.

Ream Field is currently undergoing a tremendous remodeling and rehabilitation program in connection with its facilities. A modern mess hall has recently been completed and a campus-style barracks capable of accommodating 540 men is nearing completion, with occupation set for the summer of 1967. Additionally, the older barracks are being redone to provide a more homelike atmosphere. Two and three men rooms with single tier beds, reading lights, TV-lounges and game rooms will offer more after-hours comfort for the single enlisted men.

For off-duty recreation, Ream Field has baseball diamonds, Roberts Park, a picnic area, complete with swimming pool and barbecue pits. Nightly movies, Clubs for officers, chief petty officers and other enlisted men also are available. A modern Navy Exchange, with a separate service station and a complete laundry service and dry-cleaning facilities are located on the base. A well-stocked library and a newly renovated bowling alley are well patronized.

The importance of helicopters in the current conflict in Vietnam has made Ream Field a highly important part of the overall complex of Naval Air.

### MISSION

As a unit of Commander, Fleet Air San Diego, Ream Field's basic mission is to provide facilities for the housing, organization, training and the recreation of the Fleet Helicopter Squadrons.









## REPORTING IN

### CHECKING IN

Personnel reporting aboard for duty with CO, Ream Field should have their orders endorsed by the Officer of the Day, Bldg. 8.

### AUTOMOBILE PERMITS

Automobile permits are issued by the Security Department Pass Office (inside Main Gate). Applicants must present valid operator's permit, vehicle registration and automobile insurance in minimum amounts of personal liability \$10,000/\$20,000 and property damage of \$5,000.

### DEPENDENT ID CARDS

On presentation of an approved Application for Dependent's ID Card, DD Form 1172, dependents of personnel stationed aboard Ream Field may obtain ID cards from the Ream Field Enlisted Personnel Office, Building 8 as follows:

Monday thru Friday — 0900-1115  
1300-1545

### FIRE ARMS & CAMERAS

Personnel reporting aboard with firearms must be cleared through the Armory, Bldg. 1, Ext. 201, or after normal working hours with the Sergeant-of-the-Guard.

Personnel checking aboard with cameras are required to obtain a camera pass from the Station Security Office, Bldg., 8, Ext. 278.

### HOUSEHOLD EFFECTS

If you have household effects to be shipped from your present duty station, contact your nearest Household Goods Shipping Office. Based on your orders, interviewers will explain how much you are entitled to ship, or store, and they will give you detailed information which will help your individual problems. Four copies of your orders (one certified copy) will be required for each shipment. Household goods shipped to the San Diego area will be sent to the U.S. Naval Supply Center, 937 North Harbor Drive, San Diego. Upon your arrival in this area, you may contact the Supply Center (Phone 235-3201, 235-3202 or 235-3204) for delivery of your goods to your new home. At least two days advance notice will be required for delivery.



## GENERAL INFORMATION

Ream Field is located in Imperial Beach, California, approximately fourteen miles south of San Diego. Imperial Beach is connected to all parts of San Diego County by a network of modern freeways. Some approximate distances and commuting times are as follows:

	Miles	Minutes
San Diego International		
Airport (Lindbergh Field) .....	12	20
North Island Naval Air Station .....	10	20
Miramar Naval Air Station .....	30	40
Naval Station, 32nd Street		
Commissary Store .....	8	15
U.S. Naval Hospital .....	12	20
U.S. Naval Training Center .....	17	25
El Cajon .....	25	30
La Mesa .....	16	25
Pacific Beach .....	18	30
La Jolla .....	20	30
National City .....	8	15
Chula Vista .....	6	10

### EDUCATIONAL OPPORTUNITIES

Several Universities and Colleges are readily available in the area and many Navy Personnel are busily pursuing higher education through accredited night school courses. State sponsored adult education courses are also available at nominal cost.

### NAVY EXCHANGE FACILITIES

Retail Store	1000-1700 Monday
Bldg. 36, Ext. 273	0900-1700 Tuesday
	1000-1700 Wednesday thru Friday
	0900-1245 Saturday

Service Station	0830-1700 Monday thru Friday
Bldg. 68, Ext. 270	0900-1300 Saturday
Country Store and	1000-2000 Mon., Wed., Thur. & Fri.
Beverage Shop	0900-2000 Tuesday and Saturday
Bldg. 37, 424-3134	1300-2000 Sunday and Holidays
Cafeteria	0630-1700 Monday thru Friday
Bldg. 36, Ext. 275	0800-1200 Saturday
Laundry and Dry	0830-1300 & 1330-1700 Monday thru Friday
Cleaning	Closed Saturday & Sunday
Bldg. 92	
Barber Shop	
Bldg. 32, Ext. 272	
Military Personnel	0800-1630 Monday thru Friday
Dependents	1300-1630 Monday thru Friday
Dependents Only	0800-1200 Saturday
Beauty Shop	0800-1600 Monday thru Thursday
Bldg. 32, Ext. 271	*0800-2100 Friday
	*By appointment after 1600

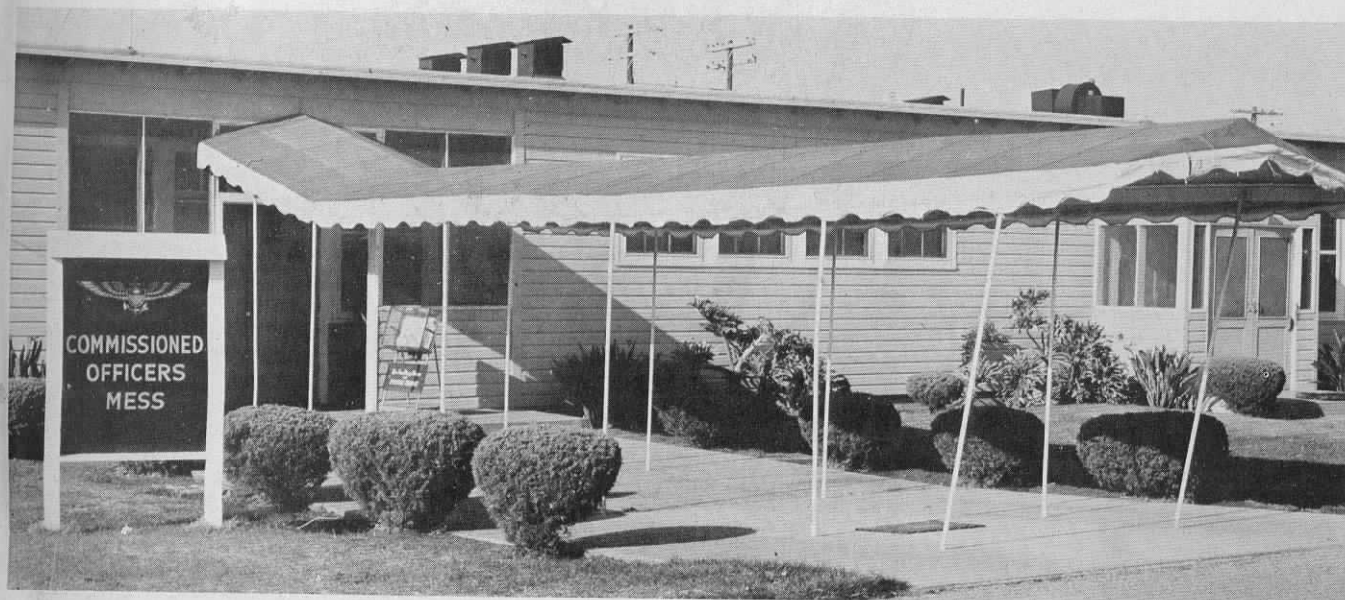
### CLUBS

#### COMMISSIONED OFFICERS' MESS (CLOSED)

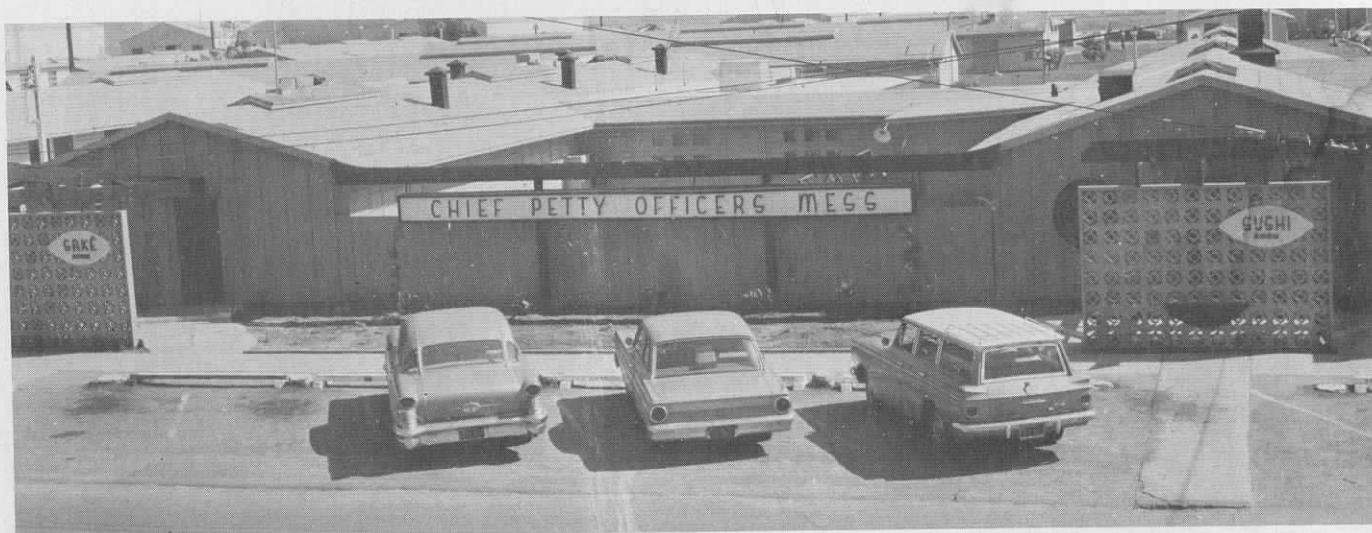
Bldg. 59, Ext. 238

Bar	1600-2200 Mon. thru Thurs.
	1130-0100 Friday
	1200-0100 Saturday
Happy Hours	1600-1900 Tuesday
	1530-1900 Friday
Wardroom—Breakfast	0630-0800 Weekdays
Lunch	1130-1300 Weekdays
Dinner	1700-1830 Weekdays
Sandwich Bar	1130-1300 Weekdays
Special Dinner	1830-2130 Friday
Swimming Pool	(See Swimming Pools)

#### COMMISSIONED OFFICERS' MESS (CLOSED)





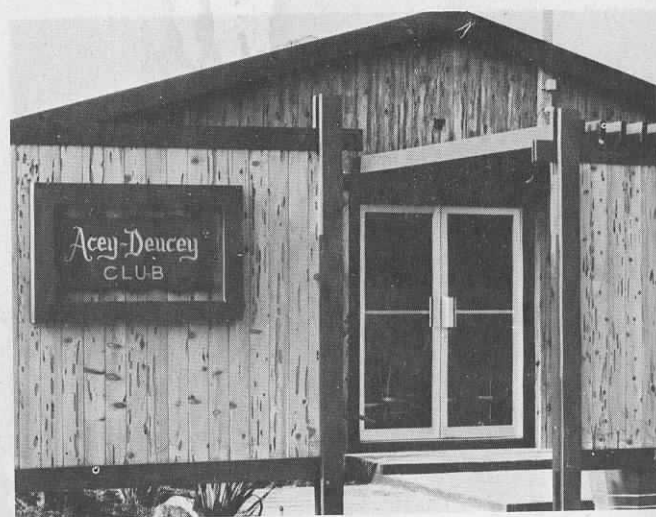


CHIEF PETTY OFFICERS' CLUB

**CHIEF PETTY OFFICERS' CLUB**

**Bldg. 16, Ext. 283**

Bar	1600-2200 Monday
	1600-2300 Tues. thru Thurs.
	1130-0200 Friday
	1030-0200 Saturday
	1130-1300 Daily (Beer Only)
	1300-2200 Sunday & Holidays
Dining Room	Closed Monday & Tuesday
	1700-2100 Wednesday
	1700-2200 Thursday
	1130-1300 & 1700-2200 Friday
	1400-2100 Saturday
	1400-2100 Sunday
Package Store (Beer Only)	1600-1900 Mon. thru Thurs.
	1300-2000 Friday
	1100-200 Sat. & Holidays
	1230-1630 Sunday



FIRST AND SECOND CLASS PETTY OFFICERS' MESS

**FIRST AND SECOND CLASS PETTY OFFICERS' MESS**  
**Bldg. 21, Ext. 231**

Bar	1600-2300 Monday thru Thursday
	1300-0100 Friday and Saturday
	1300-2300 Holidays
Dungaree Hours	1600-1800 Monday thru Friday

**ENLISTED MEN'S CLUB**  
**Bldg. 36, Ext. 275**

	1600-2300 Monday thru Thursday
	1600-2400 Friday
	1200-2400 Saturday
	1300-2300 Sunday & Holidays



ENLISTED MEN'S CLUB

## SWIMMING POOLS

### ENLISTED PERSONNEL

The Pool is located at Roberts Park on the South side of the Station.

Summer — 1 April thru 30 September

Mon. thru Fri. 0800-1100 Crew Training  
1100-1300 Enlisted Military  
1300-Sunset All Authorized Persons

Saturday 1000-Sunset All Authorized Persons  
Sun. & Holidays 1300-Sunset All Authorized Persons

Winter — 1 October thru 30 March

Mon. thru Fri. 0800-1100 Crew Training  
1100-1300 Enlisted Military  
1300-Sunset All Authorized Persons

Saturday 1000-Sunset All Authorized Persons  
Sun. & Holidays 1300-Sunset All Authorized Persons

Enlisted personnel (active or inactive), their dependents and bona fide guests, are eligible to use this pool. Children 10 years of age and who have not attained 16 years of age, must be accompanied and supervised by an adult of legal age, unless they hold a "Swimming Authorization card." This authorization card can be obtained by passing a swimming test administered by one of the life guards at the pool.

The pool is free to all Ream Field Enlisted Personnel. A fee of 15 cents per day will be charged for dependents and other enlisted personnel. A fee of 35 cents will be charged for bona fide guests.



## OFFICERS

The Pool is located at the Ream Field Officers' Club.

Monday	1200-2130
Tuesday thru Friday	0930-2130
Saturday	1000-2200
Sunday	1230-2000

FEES: The fee for all Ream Field Officer personnel is \$1 per season. Dependents and other officers, active or retired, entering pool area to swim or lounge, 15 cents per day; bona fide guests — 35 cents per day; monthly passes — \$4 each; annual family passes — \$18.



### SPECIAL SERVICES ACTIVITIES

Bowling Alley	1000-2400 Monday thru Saturday
Bldg. 23, Ext. 234	1230-2400 Sunday
	Closed Holidays
Gymnasium	0800-2100 Monday thru Sunday
Bldg. 40, Ext. 254	Closed Holidays
Hobby Shop Store	1000-2000 Monday thru Sunday
Bldg. 64, Ext. 230	Closed Holidays
Hobby Shop	0800-2000 Monday thru Sunday
Carpenter Shop	Closed Holidays
Garage	
Bldg. 80, Ext. 230	
Library	1100-2200 Monday thru Sunday
Bldg. 22	Closed Holidays
Station Theater	Doors open at 1830, Movie
Bldg. 36, Ext. 274	Starts at 1900 Monday thru Sunday
Slot Car Race	1100-2000 Monday thru Sunday
Track	Closed Holidays
Bldg. 64, Ext. 230	

NOTE: Camping equipment, such as stoves, lanterns, sleeping bags, etc., fishing equipment, boats and golf clubs, and various sporting equipment may be checked out from the Gymnasium during its hours of operation as listed above. Tennis, squash and handball courts are located between Bldg. 30 and the General Mess. One softball diamond is located adjacent to the tennis courts and one west of Robert's Park.

### COMMISSARY FACILITIES

Milk, bread, household items and garden supplies are available for purchase at the Country Store. Complete commissary store facilities are available at either NAS North Island or the Naval Station at 32nd Street, San Diego.



### ROBERTS PARK PICNIC AREA

This fine recreational and picnic area is located on the south side of the field and is open to all station and fleet personnel based at Ream Field. Barbecue pits are available. Reservations must be made in person at the Special Services Office, Bldg. 22.



### HOUSING

There are no quarters available on the station for officer and enlisted personnel with dependents. Personnel reporting to the San Diego area will be assigned Government quarters if available in the metropolitan area with a resulting forfeiture of BAQ. For further information, contact Commanding Officer, Public Works Center, Bldg. 225, Naval Station, San Diego upon arrival in the San Diego area prior to making arrangements for civilian housing. If quarters certified as not available, private housing for rental or purchase is readily available in Imperial Beach and the surrounding communities in the San Diego area. The Public Affairs Office, Bldg. 8, Ext. 233, maintains a listing of rentals.

### BOQ

There are no Bachelor Officers' Quarters at Ream Field; however, quarters are available at the Naval Station, San Diego BOQ. For information see the Administrative Chief, Admin. Office, Building 8, or call Extension 244.

### CREDIT UNION

The Ream Field Credit Union, Bldg. 18, Ext. 286, is open from 1000 to 1400 Monday thru Friday.

### POST OFFICE

The Post Office is located in Bldg. 39, Ext. 229, and is open for all services from 0730-1130 and 1300-1600 Monday thru Friday. The Post Office is open from 0900-1100 on Saturday for all services except Money Order transactions.

### RETAIL CLOTHING STORE

The Retail Clothing Store is located in Building 6, Ext. 267, and is open from 0830 to 1100 and 1200 to 1530 each Tuesday and Thursday. A complete range of enlisted men's uniform items and white shirts is stocked. Officer/CPO uniforms may be ordered directly from the Retail Clothing Stores specified in NAAS Ream Field Instruction 10121.1.

### LIBERTY LIMITS

Overnight liberty — 75 miles.

Weekend/Extended Weekend liberty — 200 miles.

Out of Bound Passes — Personnel desiring to travel in excess of limits prescribed above may submit a special request chit through the chain of command for the Executive Officer's approval. In no event will such passes be issued in excess of 150 miles for overnight and 600 miles for weekend/extended weekend liberties.

### LEGAL AID

Arrangements for legal assistance may be made through your Legal Office, Bldg. 8, Ext. 277. Assistance is provided in the form of an appointment with the Legal Staff, Commander, Fleet Air San Diego, U.S. Naval Air Station, North Island.

### CHECK CASHING FACILITIES

Government and personal checks may be cashed at the Navy Exchange Cashier's Office from 0900 to 1515 Monday thru Friday. On every other Tuesday (Payday) a check cashing van, operated by the Imperial Beach Branch of the Bank of America, is available on board the Station for cashing Government checks. Hours are from 0900 to 1200.

### GENERAL MESS

The General Mess (Galley) is located in Bldg. 10, Ext. 253. Meal hours are as follows:

#### BREAKFAST

Monday thru Saturday	0600-0730
Sunday & Holidays	0700-0900

#### BRUNCH

Sunday & Holidays	1000-1200
-------------------	-----------

#### DINNER

Monday thru Friday	1130-1230
Saturday	1130-1230
Sunday (Brunch)	1000-1200

#### SUPPER

Monday thru Friday	1630-1800
Saturday	1630-1800
Sunday & Holidays	1630-1800

### NAVY RELIEF

Navy Relief assistance is available through the Navy Relief Office at the U.S. Naval Station, San Diego, Bldg. 157 (in vicinity of the Commissary Store), Phone 235-1389. The Naval Station is eight miles north of Ream Field on U.S. Highway 101.

Layettes are available from the Navy Relief Office at 32nd Street for dependents of personnel stationed at Ream Field. The layettes are usually provided for wives of personnel in pay grade E-3 and below. Petty Officers E-4 and above may request layettes from the same office on a "need" basis. If the birth occurs at the Naval Hospital, San Diego, the layette may be requested from the hospital.

### RED CROSS

Red Cross assistance is available through the Red Cross Office located at the U.S. Naval Amphibious Base, Coronado, approximately seven miles north of Ream Field on the Silver Strand. The Phone number is 435-8700. Wives will contact the local Red Cross Chapter at 295-5121, when their husbands are deployed and needed at home in case of emergencies.

### NURSERY

A Base Nursery is available in Bldg. 87, Ream Field, Extension 397. The Nursery is sponsored by the Ream Field Special Services. Hours of operation are:

Monday thru Thursday 0700-1800

Friday & Saturday 0700-0100

Children from three months to 10 years of age may be admitted on an hourly or monthly basis during normal work days. In addition, children up to 12 years of age may be admitted on Friday and Saturday evenings. Check with the Nursery for a schedule of fees.

### DENTAL

The Dental Department is located in Bldg. 15, Ext. 235. Dental Sick Call is held daily, Monday thru Friday, from 0800 to 0900. Physical examinations and routine dental examinations are done at this time. Personnel requesting dental treatment must first be examined during Dental Sick Call and an appointment obtained. Since dental laboratory facilities are not available at Ream Field, bridge, crown and denture patients are referred to NAS, North Island for this treatment, but only after the necessary preliminary treatment has been accomplished at Ream Field. Personnel are requested to brush their teeth immediately prior to reporting for dental examination or treatment. "Toothaches" will be taken care of during morning Dental Sick Call. After that time, bona fide "Emergencies Only" will be given preferred treatment.

### MEDICAL

The Dispensary is located in Bldg. 15, Ext. 236, 237. Military Sick Call is held from 0800-0900, 1300-1400, and 1800-1830 daily. Emergencies will be seen anytime.

Dependents: Dependents Sick Call is held from 0930-1030 Monday thru Friday for Ream Field and squadrons attached only. Emergencies will be seen at anytime. There is no Medical Officer available after Flight Operations secure.

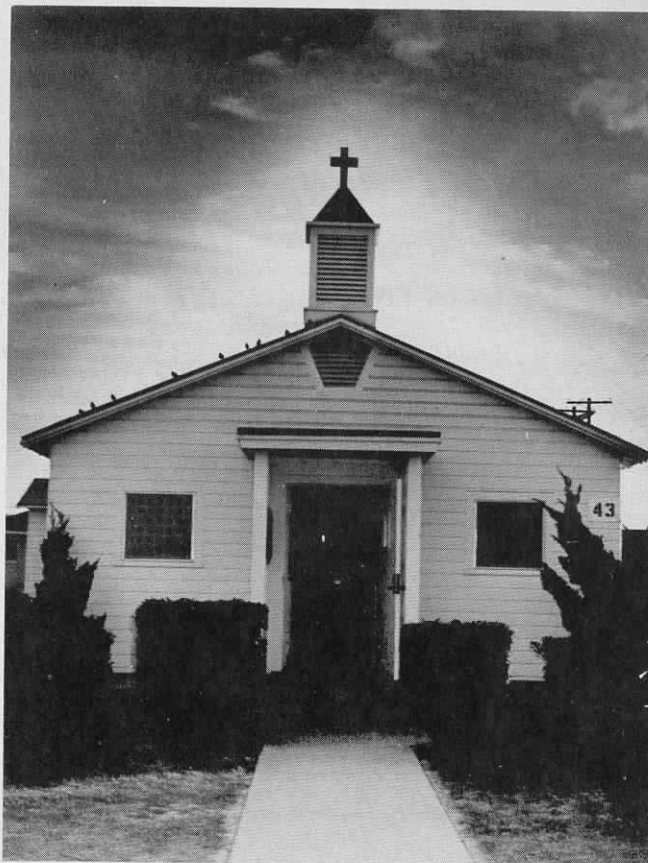
Immunizations: Dependent immunizations will be given each Tuesday afternoon 1330-1430 for Ream Field and squadron dependents.

Well Baby Clinic: Dependents Well Baby Clinic will be held at 1330 the 2nd Wednesday of each month.

Since Medical facilities are somewhat limited at Ream Field for dependents, serious illnesses, pre-natal, maternity and post-natal treatment is provided by the U.S. Naval Hospital, San Diego.

### NOT NEW SHOP

A "Not New Shop," sponsored by and staffed by members of the Silver Strand Navy Wives Club No. 113 and is available for sale and purchase of used household items. Location is Bldg. 107 (adjacent to the Country Store). Profits go to welfare and club projects. Hours are Wednesday and Friday from 1000 to 1400.



### RELIGIOUS SERVICES

Sunday

0830

1000 (free nursery)

Sunday School

0945 (Pre-School-High School)

Instructions, Baptisms, Marriages, Counseling may be arranged by contacting the Chaplain, Bldg. 20, (Ext. 289) for appointment. Holy Communion is offered at both services the first Sunday of every month. A coffee hour is held following each service for children and adults. For information regarding the choir and the Protestant Woman of the Chapel contact the Chaplain's Office.

### CATHOLIC DIVINE SERVICES

Mass Sunday \*0800 Ream Field Chapel

1100 Ream Field Chapel

Monday thru Friday 1200

\*The 8 o'clock Mass is recommended for quiet devotion of bachelors and adults; the 11 o'clock Mass for families since a free nursery is provided for the children.

You can go to Confession anytime upon reasonable request daily before and after Mass.

You can have babies baptized: Sunday 1200 after Mass. Arrange appointment in Chaplain's Office, Bldg. 20, during preceding week. NOTE: Godparents should be practicing Catholics, of course, but parents can act as proxies, if they so desire. Written statements from Godparents are required.

You can receive Instructions: Instructions for prospective converts, for those anticipating marriage and for anyone interested in Catholicism, are given upon request.





CDR R. N. KERSCH,  
Commanding Officer



CDR L. L. PARTHEMMER,  
Executive Officer

# HC-1 SQUADRON HISTORY



Helicopter Combat Support Squadron One, formerly known as Helicopter Utility Squadron One, was commissioned at NAS Lakehurst in 1948 as the Navy's first operational helicopter squadron. Shortly thereafter, the squadron was moved to NAS Miramar, San Diego where it achieved operational status, and in 1961 to its present location at the Naval Auxiliary Air Station, Ream Field, San Diego. The squadron was redesignated Helicopter Combat Support Squadron One on 1 July 1965 as it more accurately described the mission of the command. Since commissioning, the squadron's primary mission of air-sea rescue has remained unchanged. During the Korean Conflict, HC-1 pilots and crewmen were among the first into combat and pioneered new techniques of personnel rescue from behind enemy lines. For its "extraordinary heroism in action against enemy aggressor forces in Korea," HC-1 was awarded the Presidential Unit Citation and one of its pilots was decorated with the nation's highest award, the Medal of Honor.

Today, HC-1 is the largest and most active squadron of its type in the Navy. Its detachments provide helicopter services for every major ship in the Pacific Fleet from Antarctic bound icebreakers to modern attack carriers on patrol in the China Sea. Its responsibilities now extend over an area encompassing nearly a million square miles and as the versatility of the helicopter increases so do the demands for services. HC-1 accomplishes such diversified additional missions as ice reconnaissance and medical evacuation, logistic support, vertical replenishment and guided missile recovery. Yet, above all, the mission of HC-1 is the safeguarding of human life during times of peace or war. As of today, the "Angels" of Helicopter Combat Support Squadron One have successfully accomplished the rescue of over 1,000 military and civilian personnel primarily utilizing the UH-2A "Seasprite" and the UH-46A, our two jet-powered helicopters. Along with these two helicopters, the squadron uses the UH-34 "HUS," the H-19 "Horse," and the UH-13 "Bell" to perform special tasks.



CDR J. E. WILLIAMS,  
Commanding Officer

# HS-2 ... ITS PAST, PRESENT AND FUTURE



CDR M. L. HOFFMAN,  
Executive Officer (Acting)

HS-2 was formed on 7 March, 1952 as the West Coast's first Helicopter Anti-Submarine Squadron. Its first Commanding Officer was Commander Edward Bayers, who had spent several years in helicopter research and development. Executive Officer was Lieutenant Commander W. G. Knapp, holder of Helicopter Card Number One. Twenty-seven pilots from HU-1 and supporting maintenance personnel formed the nucleus of HS-2.

The first helicopter that the squadron received was a HUP aircraft, built by Piasecki Aircraft Company and specially configured for anti-submarine warfare operations. The successor to the HUP was the HO4S (H-19), a more powerful helicopter designed and built primarily as an ASW aircraft by Sikorsky Aircraft Corporation.

In turn, the HO4S was replaced in May, 1956 by the HSS-1 (H-34); and a night and all weather capability was added with the arrival of the HSS-1N, a modification of the HSS-1, introduced into HS-2 in the spring of 1961.

The squadron made its first deployments in small detachments with HSS-1 aircraft. Shortly thereafter it made its first deployment as a unit, embarking aboard the USS PHILIPPINE SEA (CVS-47) on 5 January 1957. HS-2 later deployed aboard the USS YORKTOWN (CVS-10), and is now regularly assigned to Carrier Air Group FIFTY-SEVEN aboard the USS HORNET (CVS-12).

The professional quality of the Squadron and the dedication of its men is reflected by its winning the coveted Navy "E" for combat efficiency and the Arnold J. Isbell trophy award, presented to the squadron in 1960 and 1964. HS-2 demonstrated its emphasis on safety by receiving the CNO Annual Safety Award in 1964.

HS-2 became the first Helicopter Anti-Submarine Warfare Squadron to make a deployment with the SH-3A aircraft, receiving the aircraft just prior to its 1962 Far East cruise.

The SH-3A is the first of the Navy's gas turbine-powered helicopters. Each of its two engines delivers 1250 horsepower. The main rotor has five blades and is equipped with an automatic folding system. The fuselage has a boat hull, facilitating emergency water landings. It measures just over 72 feet in flight configuration and can be loaded to a maximum gross weight of over 19,000 pounds. The crew consists of a pilot, co-pilot, and two sonar operators. The SH-3A is capable of speeds nearing 175 miles per hour and altitudes of over 10,000 feet.

The SH-3A, built by Sikorsky Aircraft Corporation,

opens a new chapter in anti-submarine warfare. Fully equipped for day, night, and all-weather operations, it can stay on station considerably longer than any previous ASW helicopter, and carries an increased and varied ordnance load consisting of conventional and nuclear depth bombs and homing torpedos.

As a result of in-flight refueling techniques pioneered by HS-2 on its 1965-1966 Far East cruise, time on station is increased indefinitely, limited only by crew fatigue and necessary maintenance. Fuel is pumped from destroyers to the SH-30 hovering alongside in a simple operation that can deliver a full fuel load to the helicopter in a matter of minutes.

The squadron mission is to detect, identify, track, and, if necessary, destroy enemy submarines. Around-the-clock operations require maximum skill and proficiency of pilots and crewmen. Teamwork is an important aspect of sub-hunting operations, as the SH-3A often works with fixed wing S2 aircraft and destroyers.

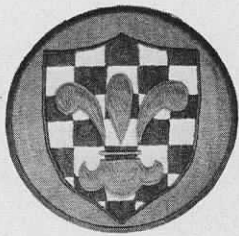
A typical ASW flight includes two or three helicopters and requires flying at or below 150 feet altitude and hovering at 40 feet in the area of the submarine contact. Once in the hover, the sonarman lowers the sonar transducer and transmits sound energy into the water, which is returned as an echo as the sound bounces from the hull of the submarine. From this returning echo, range and bearing is computed, and the submarine's position is pinpointed. At this point, the submerged object is either tracked or attacked by the helicopters in the flight or by accompanying S2 aircraft, or destroyers.

In addition, HS-2 SH-3A's may be called upon to perform functions including transfers of mail and personnel to isolated units of the task force, flying "angel" or plane guard flights near the carrier to aid in the event of an aircraft launch or recovery mishap, or rescuing downed flight personnel many miles from the carrier. New techniques are often required for new tasks, challenging the imagination and inventiveness of all HS-2 personnel.

The task of HS-2 officers and men is manifold. In our effort toward obtaining and maintaining the highest in operational readiness as a tactical unit, we must never lose sight of our national objectives and our responsibilities as individuals. Each and every officer and man must display the highest qualities in leadership, initiative and imagination if our way of life is to prevail. We in HS-2 have been given the finest equipment that money can buy. We will continue to use this equipment and ourselves in such a manner as to reflect credit, distinction, and honor upon the Navy and our country.



# HELICOPTER ANTI-SUBMARINE SQUADRON FOUR HISTORY



CDR W. L. JENSEN,  
Commanding Officer



CDR H. W. EWY,  
Executive Officer

HS-4 was commissioned on 30 June 1952 at NAAS Ream Field, Imperial Beach, California. It was one of the original four HS squadrons implementing a new Anti-Submarine concept.

Leading the squadron during its infancy was CDR W. G. Knapp, the Navy's first designated helicopter pilot. Its first helicopter was a lonely old HO3S. From this inauspicious beginning, a capable leader and a "Can-Do" spirit, sprang the potent HS-4 of today.

Many skippers have passed this way, each bringing with them new ideas and vitality and leaving behind a squadron richer in knowledge, skill and experience. The squadron has flown through the years the HO3S, HUP, HO4S, HSS, HSS-1N and SH-3A type aircraft.

Being the first ASW helo squadron to deploy aboard a carrier, the USS *RENDOVA* (CVE-114), it was equally appropriate that HS-4 should be the first helo squadron on the West Coast with a fully operational around-the-clock capability. This was attained in FY 1961, a memorable year for HS-4. During this year HS-4 was awarded the AIRPAC "E" and the coveted Isbell Trophy for ASW excellence. HS-4 was the AIRPAC nominee for the CNO Safety Award in 1961 and flew its 10,000th accident-free hour during August 1961. In March 1962, HS-4 completed its first deployment to WESTPAC as an operational, around-the-clock helicopter squadron. During the cruise, impressive statistics were compiled. In operations in the Hawaiian area, HS-4 helos tracked a submarine continuously for 36 hours . . . a significant first. HS-4 proved its all-weather capability in many extended operations. At one critique, COMCARDIV 19 remarked to COMSEVENTHFLT, "The weather was so bad only the submarine and HS-4 could operate."

During their first WESTPAC cruise with the SH-3A "Sea King," ending May 1965, the "Black Knights" continued to distinguish themselves as a professional ASW unit.

From the first day of the ORE until touchdown at Ream Field in May, HS-4 surpassed all previous records. During the ORE in Hawaiian waters the "Black Knights" contributed to COMASWGRU3, and Air Group 55 efforts aboard the Yorktown, receiving the highest evaluation ever received by an ASW Group. There were many submarine kills and defensively it was another first, since during the entire three weeks of evaluation there was not one successful attack against the "Fighting Lady."

January 1966 marked the start of a WESTPAC cruise never to be forgotten in squadron history. While operating in the waters of the Gulf of Tonkin, HS-4 personnel accounted for the rescue of twenty-four downed airmen. In some cases, these rescues involved exposure of pilots and crew to intense enemy small arms and mortar fire. In recognition of exceptional individual heroism and valor, four Silver Stars, seven Distinguished Flying Crosses, fifty-seven Air Medals and thirty-three CINCPACFLT and COMSEVENTHFLT Commendations were awarded to crew members of the "Black Knights."

The arrival of the first SH-3D on the West Coast in late December marked the beginning of a new era for the squadron.

The achievements of the past fourteen years are goals of which every member of the squadron is justly proud.

# THE HISTORY OF HELICOPTER ANTI-SUBMARINE SQUADRON SIX



CDR W. H. LOCKWOOD,  
Commanding Officer



CDR A. D. FOX,  
Executive Officer

Helicopter Anti-Submarine Squadron SIX (HS-6) was originally commissioned on June 1, 1956 aboard the USS PRINCETON (CVS-37) in the Pacific, midway between Formosa and Okinawa.

HS-6, one of three squadrons comprising Carrier Anti-Submarine Air Group Fifty-Three, has the mission of "denying the enemy effective use of their submarines." To accomplish this task the squadron utilizes the Sikorsky SH-3A "Sea King," a twin turbine, fully instrumented, all weather helicopter. These aircraft, the fifth of a line, have brought the helicopter squadron to the forefront in the anti-submarine role. When originally commissioned, squadron pilots flew the HD4S helicopter. Those, however, were replaced by the HSS-1 in time for the squadrons first full scale deployment, which took place in 1958, aboard the USS PHILIPPINE SEA (CVS-47).

Subsequent to this deployment the squadron received the HSS-1N, a helicopter developed especially for "around the clock" operations which alleviated HS squadrons of the "daylight only" stigma. This aircraft proved its capability on the squadron's next deployment aboard the USS KEARSARGE (CVS-33) in 1959.

The squadron joined Carrier Anti-Submarine Air Group Fifty-Three in April 1960 and in 1961 again deployed to the Western Pacific aboard the USS KEARSARGE.

The first SH-3A was received March 1962 and greatly increased squadron capabilities for the 1962-1963 cruise. During the early part of this deployment the squadron participated in the recoveries of the astronauts Walter M. Schirra and L. Gordon Cooper.

The next deployment began in March 1964 and found HS-6 supporting the Seventh Fleet forces in the South China Sea. During these special operations, precipitated by hostile action in the Gulf of Tonkin, HS-6 flew what then was a record 1292 hours during a thirty day period.

HS-6 returned to CONUS in December 1964 to enter their normal training cycle. During this period the squadron won the COMNAVAIRPAC Battle Efficiency "E" and the CNO Safety Award. It also became the first squadron to receive the "second generation" SH3A with the new and versatile AQS-13 sonar. This new equipment, after being refined by the squadron, is again proving the role of the ASW helicopter.

HS-6 embarked in USS KEARSARGE June 9, 1966 as a member of CTG 70.4/77.9 for a Western Pacific deployment. In addition to performing its regular anti-submarine warfare role, the squadron participated in various other activities, the most noteworthy of which is the Seven Nation Conference at Manila. Here logistic, medical, and security support was provided for the President, his party, and the American Embassy. Over-shadowing this, HS-6 again distinguished itself by rescuing sixteen aviators downed in the Vietnam area. For this work the squadron was nominated for the Presidential Unit Citation.

The squadron returned to the United States December 20, 1966, where it is presently undergoing extensive training for its next deployment to the Far East.





CDR D. L. HUGHES,  
Commanding Officer

# HISTORY OF HS-8



CDR E. MASSA,  
Executive Officer

Commissioned as an operational fleet Helicopter Anti-Submarine Squadron on 1 June 1956, HS-8 first Commanding Officer was LCDR R. WEST. LCDR WEST served as acting C.O. until the arrival of CDR Louis F. KNIGHT in July 1956. CDR Alton W. PAYNE held the post of Executive Officer during the first year of operation.

Based at NAAS Ream Field, Imperial Beach, California, the new squadron began an extensive training program to ready her crew for the future. Within a year the squadron was ready for development in the fleet.

July 12, 1957, saw HELANTISUBRON EIGHT depart for the Far East aboard the USS PRINCETON (CVS-37) after numerous training cruises.

While operating near the Philippine Islands, HS-8 was called upon to airlift food and medical supplies to a company of flooded Marine Engineers, high in the mountainous terrain above Manila.

During late December 1958 the PRINCETON and HELANTISUBRON EIGHT were rushed to Singapore to receive food and medical supplies bound for flood-stricken Ceylon. Working in conjunction with British, Marine, and Navy Commands, a record number of tons of supplies was flown from the ship to the waterlocked people. For this mission "Operation Mercy," the squadron was commended by the Secretary of State, John Foster Dulles.

In early January, 1958, CDR L. F. KNIGHT was relieved as Commanding Officer by CDR A. W. PAYNE. CDR KNIGHT went to serve as the PRINCETON'S Air Operations Officer, as CDR PAYNE brought the squadron home to San Diego a month later.

Commander George HAINES and Commander Harold KEST served as Executive Officers until the arrival of Commander Alvin F. EMIG.

Change of Command ceremonies took place early in January 1959 when Commander PAYNE received orders to a post in BUAER and Commander EMIG became the Commanding Officer of the Squadron. At this time the squadron was anticipating the arrival of the new Executive Officer, Commander William C. BUTLER. Commander BUTLER arrived in February and took over as Exec. Preparations were in progress for the coming cruise to WESTPAC aboard the USS HORNET (CVS-12).

April saw the HORNET leave the outer buoy at NAS North Island again bound for the Far East. HS-8 returned to Ream in October, 1959, landing her first helo on the morning of the 9th.

After a relatively short leave period, the training

cycle once more got into full swing. Christmas 1959 brought the annual Children's party for which HS-8 has become well known throughout the San Diego area.

Change of command ceremonies were held in February for Commander BUTLER to relieve Commander EMIG. The training cycle was completed in a year and Commander BUTLER took the squadron aboard the USS BENNINGTON (CVS-20) to begin its third deployment. During this cruise the squadron participated in "Operation Handclasp" by collecting 1500 pounds of clothing in San Diego and taking it to refugees in Hong Kong. The squadron, in January 1961, passed another milestone by increasing their safety record to over 10,000 accident free flight hours, marking over two years of accident free flying. In change of Command ceremonies held aboard the USS BENNINGTON (CVS-20) in February 1961, Commander W. "L" AYDELOTT relieved Commander BUTLER as Commanding Officer. LCDR O. N. WILLIAMS became acting Exec., while awaiting arrival of Commander C. H. KLINDWORTH the following May.

In March 1961, HS-8 was relieved from its 7th Fleet duties, and returned to NAAS Ream Field in April. An immediate transition was begun from the "old" HSS-1 helicopter into the new and more sophisticated HSS-1N. The short cruises lasted through November 1961, and then on 6 January 1962, the squadron departed for the Western Pacific.

While in Subic Bay, P.I., Commander C. H. Klindworth relieved Commander Aydelott as Commanding Officer on 6 April 1962. Commander R. G. Baker became acting Executive Officer until Commander J. R. Evans arrived the following month.

Early in May the BENNINGTON and HS-8 steamed off the coast of South Vietnam. In late July 1962, the squadron returned to NAAS Ream Field. In December 1962, the squadron received its first SH-3A Sea King Twin Turbine powered helicopter and flew its 10,000th accident free flight hour. On 22 March 1963, the squadron received the COMNAV-AIRPAC Battle Efficiency Plaque.

The squadron's most recent activities since returning from deployment in October 1965 have included the development of improvements to inflight refueling from destroyers, helicopter control of the Dash drone helicopter and the Ryan Fire Fish target boat, and a possible record for perhaps the longest helo medical evacuation of some twelve hundred miles. The summer of 1966 was a busy one for the squadron with shipboard and shore training in preparation for deployment to the Western Pacific in November 1966.

# HELANTISUBRON TEN HISTORY



CDR D. J. HAYES,  
Commanding Officer



CDR R. S. BRUNING,  
Executive Officer

Helicopter Anti-Submarine Squadron TEN (HS-10) was commissioned on 30 June 1960 to train replacement helicopter pilots, aircrewmen, and maintenance personnel for further duty in the helicopter anti-submarine squadrons of the Pacific Fleet.

Commander L. W. Metzger III, U.S. Navy, Commander Carrier Anti-Submarine Air Group 51 (COMCVSG-51) commissioned HS-10, having the additional duty at that time as Commanding Officer. Commander Leroy G. Wade assumed command of HS-10 on 2 September 1960 after serving a tour of duty as Commanding Officer of HS-4. Commander Wade was relieved by Commander W. L. Bennett, former Commanding Officer of HS-3, on 1 September 1961. Commander A. E. Monahan, the former Commanding Officer of HS-4 relieved Commander Bennett as the Commanding Officer of HS-10 on 9 July 1962. Commander Monahan was the first HS-10 trained officer to return as the Commanding Officer of the squadron. Commander O. R. Toon relieved Commander Monahan on 14 September 1962 bringing the latest in fleet experience to HS-10 from his tour as Commanding Officer of HS-2. Commander H. V. Pepper, former Commanding Officer of HS-11 relieved Commander Toon on 30 August 1963. Commander M. R. Starr, former Commanding Officer of HS-6, relieved Commander Pepper on 22 January 1965. In December 1965. In December 1965 Commander Starr was relieved by Commander G. E. Smith, former Commanding Officer of HS-8. In June of 1966 Commander Smith was relieved as Commanding Officer of HS-10 by Commander D. J. Hayes, the former Commanding Officer of HS-2.

As a unit of Fleet Air San Diego, HS-10 is charged with the responsibility of training all helicopter pilots, aircrewmen, and maintenance personnel for further transfer to Pacific Fleet HS squadrons.

Since commissioning, a total of 545 pilots, 439 aircrewmen, and 936 maintenance personnel have been trained. In addition, flight training has been afforded prospective Commanding Officer of Amphibious Assault Ships, Prospective Air Group Commander, U.S. Army, Marine Corps, and foreign pilots and maintenance personnel from Chile, Brazil, Japan, Italy, and Canada.

Flying the SH-3A helicopter, the replacement pilot receives the latest in anti-submarine warfare tactics employing the newest in the weapons systems. With no small amount of just pride HS-10 can boast of supplying the Pacific Fleet Anti-Submarine Warfare helicopter squadrons with all their pilots and personnel.

Now in its sixth year of operation, under the present command of Commander D. J. HAYES, Helicopter Anti-Submarine Squadron TEN (HS-10) boasts, with justifiable pride, of training the best to keep our Pacific Fleet Anti-Submarine Squadron in readiness.



# SOUTH BAY AREA

Bay area of the City of San Diego on the East, Baja California (Mexico) on the South, and the Pacific Ocean on the West.

## IMPERIAL BEACH

The City is characterized as a residential and recreational community, with modern homes, schools, shopping centers and an excellent beach. Employment within the city is generally confined to retail and service outlets and the adjacent military installations.

Imperial Beach has an area of 4.4 square miles, or 1,535.4 acres (not including streets, alleys and Ream Field). The 1960 Federal census placed the city's population at 17,773; the present population is estimated at 22,500. There are approximately 5,586 families living in our city.

### IMPERIAL BEACH CHAMBER OF COMMERCE

*"The Nation's Most Southwesterly City"*

Post Office Box 2 • GA 4-3151 • Imperial Beach, California

WELCOME TO IMPERIAL BEACH.....

Where fun and sun reign by the sea and there's fun for all at the year around "Vacationer's Paradise".

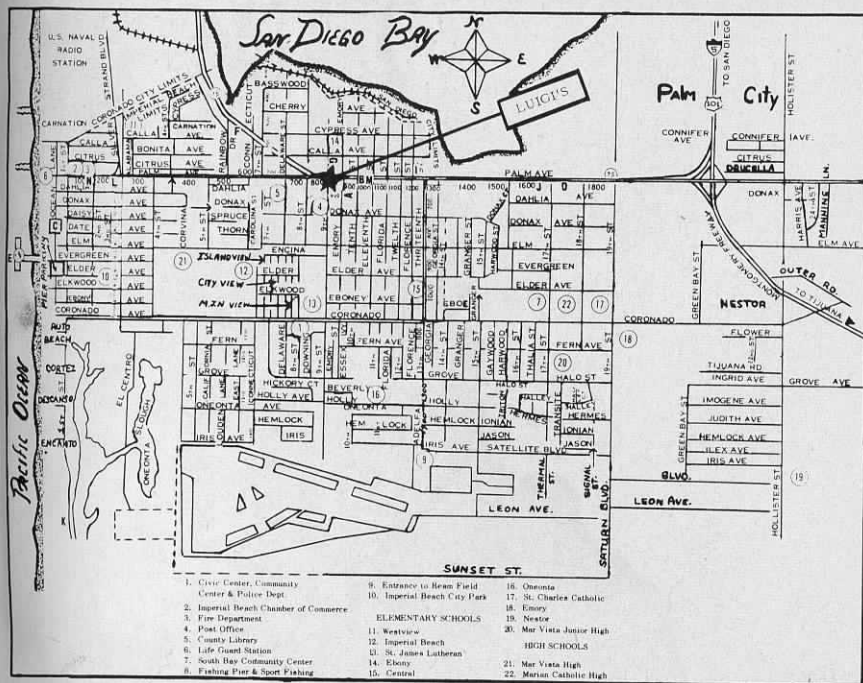
Imperial Beach is at the entrance to Silver Strand State Park, the loveliest beach in California. Here within a hundred yard distance, are found surfing sports in the ocean and calm water fun in Blue San Diego Bay. Our city offers all the conveniences of the "big city" plus the neighborly atmosphere found only in a small, friendly community.

The Imperial Beach Chamber of Commerce would like to express our gratitude to the military personnel and their families who live in our city for their support to our community affairs. Many of the military parents serve our community as members of the local PTA groups, Scout leaders, Committee members for the various organizations and members of our local churches. We are very proud of the civilian-military relationship which exists among our citizens.

We are happy to have you with us and we want you to enjoy your stay here

Sincerely,

Vicky Phillips,  
Manager



Imperial Beach is truly  
a city on the move . . .  
we're so glad you're here  
to share all of this with us.



# CHULA VISTA

2nd Largest City in Dynamic San Diego County

Chula Vista is located eight miles south of San Diego on the shores of San Diego Bay in the extreme southwestern corner of California. The second largest city in San Diego County, it is a modern, attractive, spaciouly-planned community of more than 50,000 people, situated on the green plain between the bay and the foothills of the Laguna Mountains. Chula Vista means "pretty view" in Spanish and the city well lives up to its name.

As part of the dynamic growth pattern of southwestern California, the fastest growing section of the nation, Chula Vista shares in the many natural advantages of this varied, exciting region of family living, recreation and industry. Chula Vista has trebled its population twice in each of the last two decades and this solid growth has been based on a unique balance of industry, commerce, agriculture and retirement.

Chula Vista is a creative city, moving forward but retaining the grace and pleasantness of unhurried living. While population figures have surged upward, civic leaders have met the needs of a growing city with excellent schools, fine

parks, efficient fire and police protection and other municipal services.

One of the most constructive projects of the city is the development of the tidelands for industrial purposes. Hundreds of new acres are being dredged from the South Bay to provide new industrial sites. Proposed port facilities will enable world shipping to come directly to Chula Vista.

Chula Vista, home of the Rohr Corporation and other firms, offers many advantages for industry. Nearness to a growing California and Western market, excellent rail, truck, plane and marine transportation — and an abundance of electricity, gas and other utilities are strong inducements. A skilled labor pool and unusually fine educational facilities are additional advantages.

Chula Vista is a wonderful place to visit, a better place to live. It has one of the most enviable climates in the world — with clear, sunny weather cooled by ocean breezes. Recreational opportunities abound in the nearby Pacific, mountains and desert play areas — and Mexico is minutes away across a friendly border.



# NATIONAL CITY

A city of pleasant living in a suburban community of rolling terrain with panoramas of bay and mountains. Located on San Diego Bay, National City shares its northern boundary with San Diego and is just ten minutes from either downtown San Diego or the Mexican Border.

Homes are built to take advantage of the gracious outdoor living which is possible during the greater part of the year. Recent housing developments have made attractive homes available to moderate-income families. The climate is remarkably mild and equable and compares favorably with some of the world's most famed climates. The prevailing winds are tempered by the Pacific Ocean, with the result that summers are cool and winters warm in comparison with other places along the same general latitude. Temperatures along the coast have little variation between the maximum

and minimum, with National City having only a variation of  $14^{\circ}$  from its annual average of  $63.4^{\circ}$ . As on the rest of the Pacific Coast, a dominant characteristic of spring and summer is the night-time and early morning cloudiness. Low clouds form regularly and frequently extend inland over the coastal valleys and foothills, but they usually dissipate during the morning, leaving the afternoons generally clear. Visibilities are good as a rule with sunshine plentiful.

National City offers complete educational facilities, including eight elementary schools, two junior high schools, one high school, three parochial schools and an outstanding adult education program. College and university facilities are situated within commuting distance, with a junior college just a few minutes drive from National City.



National City's new \$1-million Civic Center.



Recreational facilities are plentiful in National City—shown here the National City Municipal Golf Course. In the background, National City's beautiful, year-round olympic-size swimming pool.





## DINING OUT

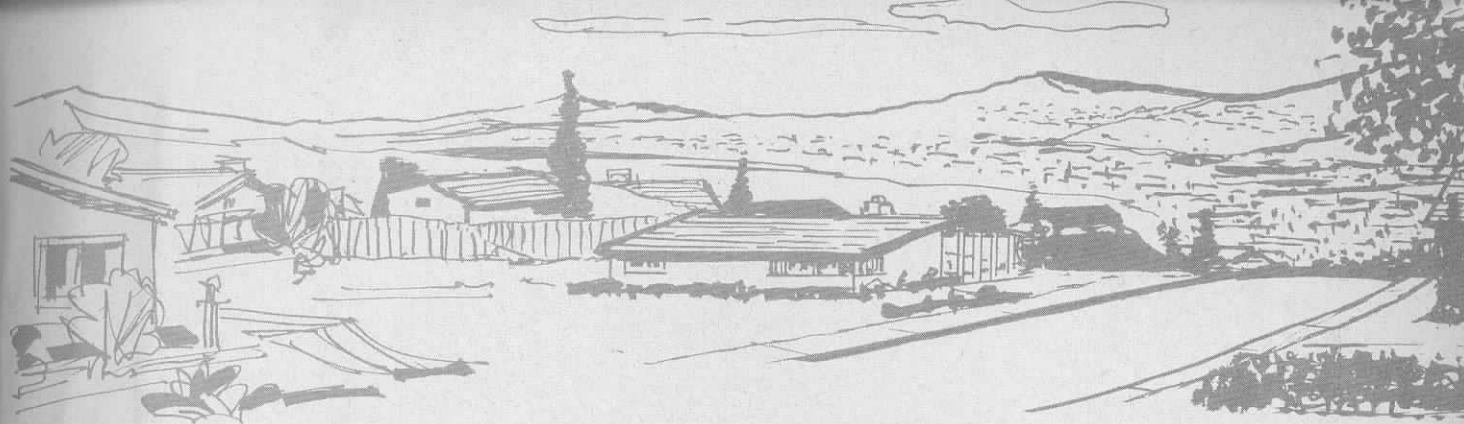
### THE RED FOX

The Red Fox was an old inn in Surrey, England, and dates from about 1560. The three small, original rooms, slightly different in design, have been combined to form a spacious "tap room." The bar, back-bar and the trim around the doors with the interesting, small carved figures, all come from Charles of London, and date 1560. The paneling in Tudor. The fireplace panel, with its finely carved over mantel, bears the date 1642. The three arched panels tell the story of Rebecca and Isaac as found in Genesis, Chapters 24 and 27.

The room was dismantled in 1926 and shipped to the United States for the petite blonde cinema actress, Marion Davies, who was at the height of her career popularity. Beach homes were a must for the movie colony of those halcyon days. So, when Miss Davies decided that the song of the surf was the requirement for quiet nights of relaxation from studio demands, these rooms were dismantled and shipped across the Atlantic Ocean in sections, and thence across America to be completely rebuilt at the "Ocean House." Approximately ten years ago, this property was sold and Miss Davies' "Ocean House" was converted into a hotel.

Some time later, this property was dismantled and the Red Fox Room was placed in storage. It is from this source that the Red Fox has finally found its resting place in the Lafayette Hotel in San Diego, to once again be admired as such a beautiful room should be.





## WHERE TO STAY

### HELENA MOBILE PARK

We would like to call your attention to the modern and spacious living at the Helena Mobile Park. We have all the conveniences of modern city living with the beauty and quietness of the country.

Large Recreation Hall with two Pool Tables, Large Heated Pool, Therapy Pool, Sauna Baths add to the year round comfortable living of Southern California.

Shuffleboard, Horseshoes and Croquet accommodate our outside facilities for your fun and recreation.

Another feature we wish to call to your attention is the central location of our park to the following Military Installations: Ream Field, Naval Communication Center, Coronado Amphibious Base, NAS North Island and 32nd Street Naval Repair Facilities. Also within easy driving are NAS Miramar, U.S. Naval Training Center, Point Loma, Naval Electronics Lab., Point Loma and Submarine Base, Point Loma.

Large spacious lots with two car off-street parking and nearby laundry rooms make the park one of the best (152 Space) Mobile Home Parks in California.

### KINSELLA & WARREN, REALTORS

Dick Kinsella and Tax Warren are two retired navy chiefs who have been successful in the real estate business in Imperial Beach for many years. Their success has been accomplished by good professional and personalized service to navy personnel whether they are buying, selling, renting or in need in property management. Both are aware of your needs and strive to satisfy. They specialize in FHA, VA and CAL-VET financing and are an approved VA sales broker. They are members of the Fleet Reserve Association Branch 289, Coronado chapter of the Navy League and the Imperial Beach Rotary Club. On their sales staff they have Lee Semken, MAJ USA (ret) and Neil Powell, LCOL USMC (ret).

Their motto is quite apropos: "Old enough to be experienced, young enough to be aggressive, large enough to be efficient, small enough to be personalized." They are located at 495 Palm Ave., Imperial Beach, Phone 424-8626 (any time).

### SIESTA MOBILE HOME PARK

Siesta Mobile Home Park and Sales, the most southwesterly mobile home park in the United States, located in an entirely residential area, within walking distance of the beach, shopping center, and public fishing pier, and only three blocks to schools. Children are welcome but no pets.

The park is well landscaped with lots of trees and shrubbery and all spaces have cement patios and lawns.

You will find the rates the most reasonable of any park in the area.

The park has 100 spaces and can accommodate up to 10' x 50' mobile homes. For more information write Siesta Mobile Home Park, 409 Palm Avenue, Imperial Beach, California 92032. Ph. 424-8598.

### CASA LOMA APARTMENTS

Casa Loma Apartments are located only freeway minutes away from Ream Field. This apartment complex is exclusive for adult tenancy, with a large heated swimming pool.

World famous Balboa Park is a mere 4 blocks away, and Casa Loma Apartments are adjacent to Balboa Park Municipal Golf Course, for your leisure time and recreation.

Casa Loma Apartments are nicely furnished and decorated with the latest in nylon carpeting and drapes.

### WOODLAWN GARDENS

Woodlawn Gardens is located 600 feet east of Interstate 5 at the "H" Street off-ramp. It is a complex consisting of 90 apartments, in which rentals are available for adults only, adults with teen-agers, and families with small children.

Each building has its own laundry facilities, with the latest equipment. Each apartment has been wired for cable T.V., thus making it possible for you to view all the latest movies and new programs on local and Los Angeles channels.

Woodlawn Gardens is within 2 blocks of a major shopping center, banking and savings institutions, medical and dental offices.

Woodlawn Gardens is adjacent to an elementary school, is only 8 blocks to Chula Vista Junior High School, and 9 blocks to Chula Vista High School.

### OCEAN FRONT APARTMENTS

The Ocean Front Apartments, located at the northern end of the beach, were built with the modern family in mind. They are quiet, spacious and comfortable. In addition, each apartment has its own ocean view as well as a private balcony.

The Pacific Ocean is literally "at your feet" in these unique apartments. Yet, Ream Field is only minutes away.

Navy families are particularly welcome here and every effort is made to assure private, comfortable living.

642 Ocean Lane — Imperial Beach — Ph. 424-7704



**APPLIANCES**

**FURNITURE**

**CUSTOM  
DECORATING**



**AUTOMOTIVE**

**FASHIONS**

**HOME  
IMPROVEMENT**

OPEN  
MON - SAT  
TIL 9 PM

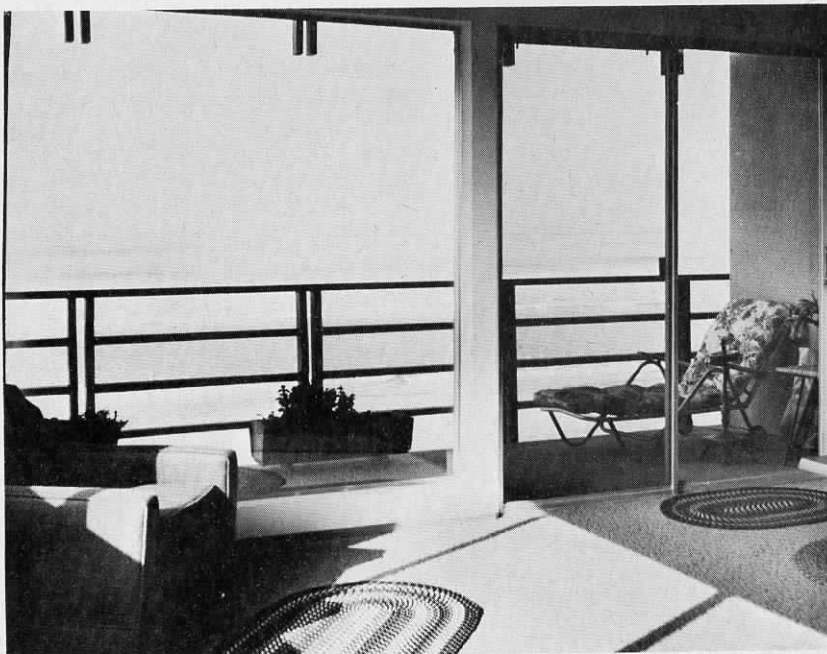
**MONTGOMERY WARD**

**474-4661**

**1100 HIGHLAND AVE. NATIONAL CITY**

OPEN  
SUNDAYS  
TIL 5 PM

**BASE MAP**



**OCEAN FRONT  
APARTMENTS**

Every Apartment With A Beautiful  
Ocean View - At The  
North End Of The  
Beach.

10 MINUTES FROM  
REAM FIELD  
WEEKLY FROM 75.  
MONTHLY FROM 140.

**642 OCEAN LANE**

**IMPERIAL BEACH**

**424-7704**

**M  
I  
Y  
A  
K  
O**

## Japanese and Cantonese Cuisine

AUTHENTIC JAPANESE ROOMS-CHO-CHIN COCKTAIL LOUNGE

BUSINESSMEN'S LUNCH  
HAPPY SAKI TIME

MAJOR CREDIT  
CARDS HONORED

**2137 PACIFIC HIGHWAY, SAN DIEGO**

OPEN FROM 11 A.M.

**233-7168**  
ORDERS TO GO



CLOSED TUESDAYS

# FULLER FORD



YOUR  
NAVAL BASE  
FOR ALL YOUR  
AUTOMOTIVE NEEDS

Two GREAT Locations to SERVE you —

942 PALM — IMPERIAL BEACH  
424 — 3922

760 BROADWAY, CHULA VISTA  
422 — 9222

**NEW CARS - USED CARS - TRUCKS**

ALSO — RENTAL CARS & LEASING AVAILABLE

**COMPLETE SERVICE FACILITIES AT CHULA VISTA STORE**

AUTO PARTS & BODY SHOP

WELCOME ABOARD

**THE BEST DEALS IN TOWN  
FOR SERVICEMEN**

SEAMEN FINANCED

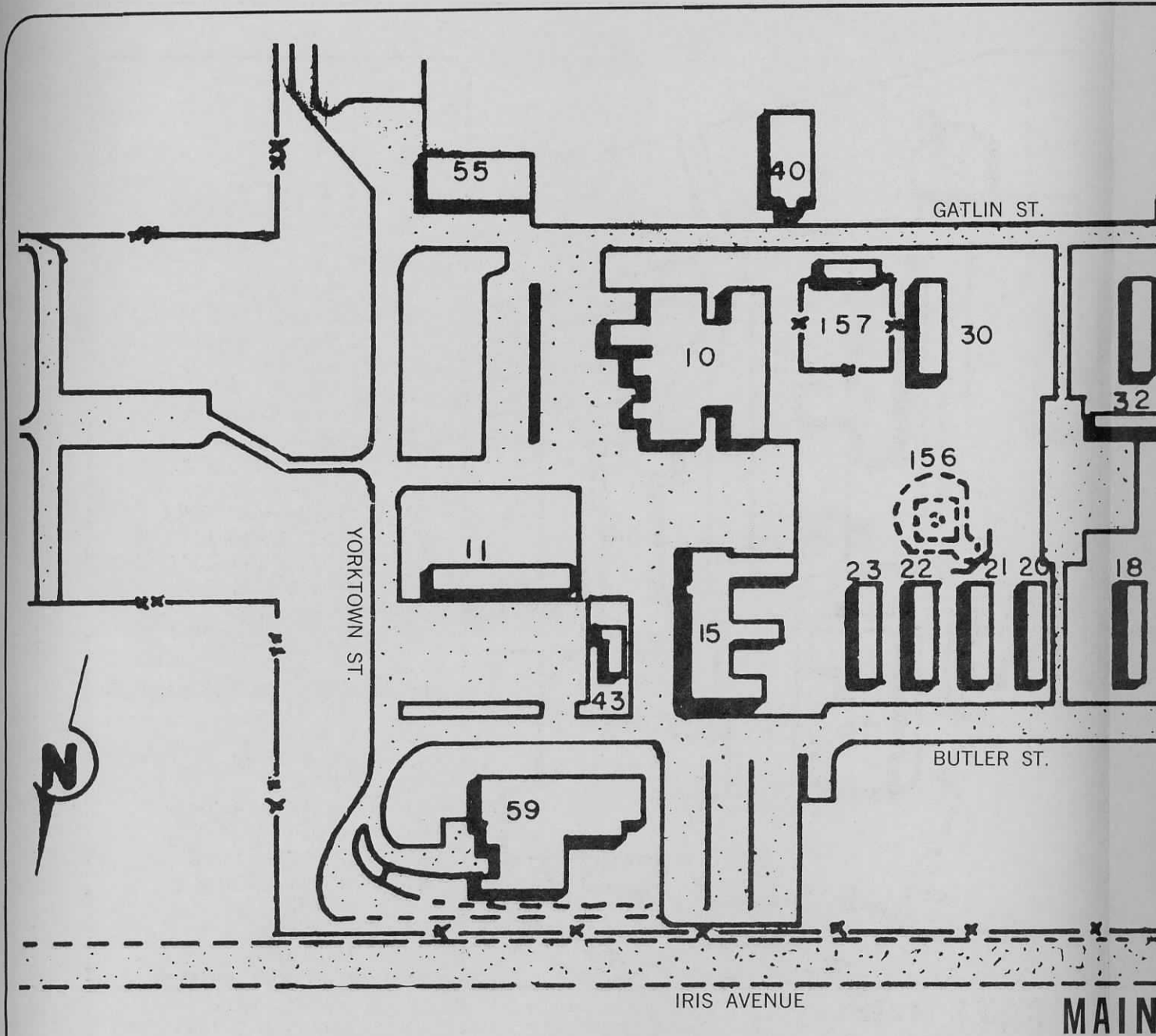
## **CHULA VISTA AUTO SALES**

1515 PALM AVE.

IMPERIAL BEACH

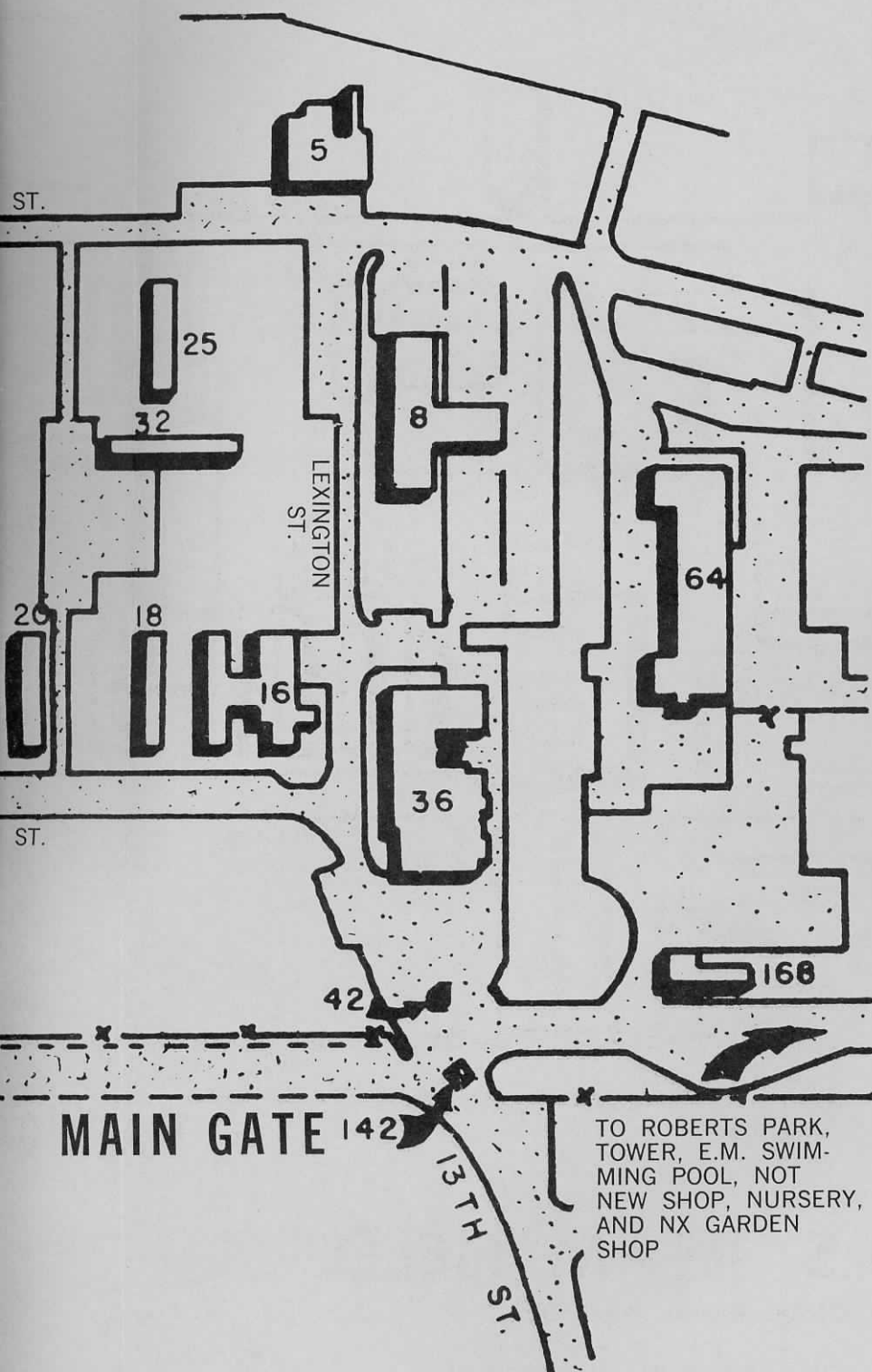
423-0639  
423-0642





# N.A.A.S. REAM FIELD

IMPERIAL BEACH, CALIFORNIA



## LEGEND

BLDG. NO.	DESCRIPTION
5	FIRE STATION
8	ADMINISTRATION, NAAS
10	GALLEY
11	BOQ
15	DISPENSARY
16	CPO CLUB
18	DISBURSING & CREDIT UNION
20	CHAPLAIN'S OFFICE
21	ACEY DUCEY CLUB
22	SPECIAL SERVICES CLUB
23	BOWLING ALLEY
25	HS-10 ADMIN.
30	HC-1 ADMIN.
32	LAUNDRY
36	NAVY EX., E.M. CLUB & THEATER
40	GYM
42	PASS OFFICE
43	CHAPEL
37	NX GARDEN SHOP
55	HC-1 DUTY OFFICE
59	OFFICER'S CLUB
64	HOBBY SHOP & NAMTG
87	NURSERY
142	MAIN GATE
156	SOFT BALL DIAMOND
157	TENNIS COURTS
168	SERVICE STATION
107	NOT NEW SHOP





**service  
personnel  
"think brown"!**



**BROWN MOTORS, INC.**  
Volkswagen  
18th & National • National City  
747-5521 — 264-0147

NEW & USED VWS/COMPLETE SER. & BODY DEPT./ FINANCING WITH VW SIZE PAYMENTS

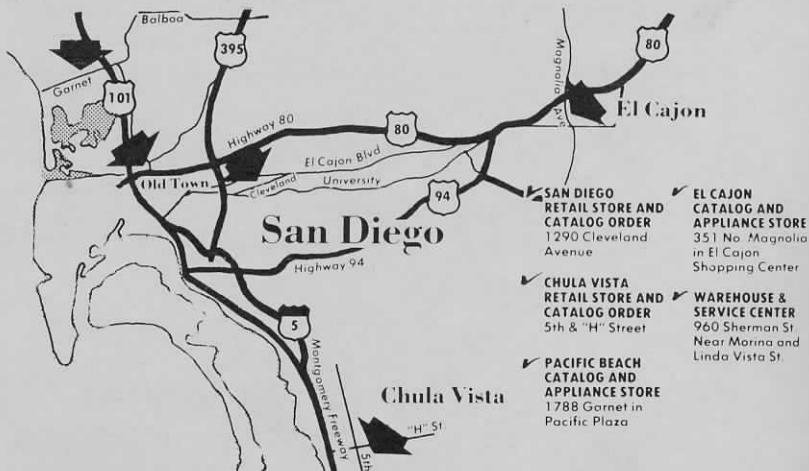
**Sears**

Your Hometown Store Is Here In San Diego Ready To Serve You  
And Your Family At Two Handy Locations, Plus Two Convenient  
Appliance Stores And Service Center.

You Can Count On **SEARS**

• SERVICE • CREDIT • VALUE • FASHION • QUALITY

You're Only  
Minutes  
Away From  
Your Nearest  
Sears Store



**Red  
Fox**

**Steak House  
AND  
Cocktail Lounge**

for the finest in  
Dining Pleasure



2223 ELCAJON BLVD.

297-1313

# CLASSIFIED BUYING GUIDE

The business firms listed herein are responsible for the publication of this brochure and guide. They welcome you and solicit your patronage. Please mention to them that you saw their advertisement in the Ream Field Auxiliary Naval Air Station Introductory Brochure and Guide.

## AAA AUTO CLUB

ALTIG TOWING SERVICE

1760-B Palm Ave., Imperial Beach ..... 423-1878  
(See our Ad. under Auto Towing)

## AIRCRAFT RENTAL—FLIGHT TRAINING

SOUTH BAY AIRPORT CO.

Building 85, Brown Field, Chula Vista ..... 422-5543  
(See our Ad. under this Classification)

\* STUDENT INSTRUCTION (ALL AGES) FAA APPROVED  
\* LICENSE IN 35 HRS. MINIMUM FLYING TIME  
\* CHARTER SERVICE FOR HUNTERS & SPORTSMEN TO UTAH, MEXICO ETC  
JOIN THE 12 YEAR OLD CHULA VISTA FLYING  
CLUB & MEET THE HAPPY SKY-RIDING FRATERNITY

### SOUTH BAY AIRPORT CO.

BLDG. 85, BROWN FIELD, CHULA VISTA, CALIF. 422-5543

## AIRLINES

SOUTH BAY TRAVEL CENTER

1007 Plaza Blvd., National City ..... 474-2206  
(See our Ad. under Travel Agency)

## AMUSEMENT

JANAL ROCKET ROLLER RINK

1770 Palm Ave., Imperial Beach ..... 423-2622  
(See our Ad. under Roller Skating & Instructions)

## ANTENNA SUPPLIES

SOS ELECTRIC SUPPLY

2615 Main St., Chula Vista ..... 424-1135  
(See our Ad. under Electronic Supplies)

## APARTMENTS

APARTMENT MANAGERS INC.

907 Turquoise St., San Diego ..... 276-6226  
(See our Ad. under this Classification)

GOLDEN STATE REALTY

5511 El Cajon Blvd., San Diego ..... 583-4040  
(See our Ad. on Inside Front Cover)

JAY "L" JAY DEVELOPMENT COMPANY

244 Palomar, Chula Vista  
(See our Ad. under this Classification)

KINSELLA & WARREN REALTORS

495 Palm Ave., Imperial Beach ..... 424-8626  
(See our Ad. under Realtors)

BRAND NEW COMPLETELY FURNISHED

## GARDEN APARTMENTS

3 HEATED POOLS - UTILITIES PAID

## SPECIAL MILITARY RATES

(ACTIVE & RETIRED)

ONE BEDROOM \$79.50

TWO BEDROOM \$104.50

WEEKLY RATES AVAILABLE

COMPLETE LAUNDRY FACILITIES - AMPLE OFF STREET PARKING

CHILDREN WELCOME

FREEWAY MINUTES TO YOUR BASE

## JAY - L - JAY APTS.

3RD & PALOMAR

RENTAL OFFICE

CHULA VISTA



## APARTMENTS—APPLIANCES

### MAJESTIC DEVELOPMENT INC.

373 "E" ST. - CHULA VISTA

#### APARTMENTS

424-6012

1325 13TH, IMPERIAL BEACH

#### HOMES

427-2010

CHULA VISTA

#### REAL ESTATE

420-1070

CHULA VISTA

#### APARTMENTS (Cont'd)

##### OCEAN FRONT APARTMENTS

642 Ocean Lane, Imperial Beach ..... 424-7704  
(See our Ad. in Map Section)

##### MAJESTIC DEVELOPMENT, INC.

1325 13th St., Imperial Beach ..... 424-6012  
(See our Ad. above this Classification)

#### APPAREL—WOMENS

##### SEARS-ROEBUCK & COMPANY

1290 Cleveland Ave., San Diego ..... 298-8111  
(See our Ad. in Map Section)

#### APPLIANCE PARTS

##### APPLIANCE PARTS CENTER, Cari Meints, USN. Ret.

"Help for Do-It-Your-Selfers"  
916 National Ave., National City ..... 474-6781

#### APPLIANCE REPAIRS

##### BROWN'S VACUUM SERVICE

605 Highland Ave., National City ..... 477-7777  
(See our Ad. under Vacuum Cleaners) ..... 477-0398

#### APPLIANCES—SALES

##### HIGHLAND FURNITURE MART

1231-1245 Highland Ave., National City ..... 477-4171  
(See our Ad. under Furniture Dealers)

##### MONTGOMERY WARD

1100 Highland Ave., So. Bay Plaza, National City ..... 474-4661  
(See our Ad. under Base Map)

##### SEARS - ROEBUCK & COMPANY

555 5th St., Chula Vista ..... 427-2100  
(See our Ad. in Map Section)

##### STAPLES-WYMORE FURNITURE STORES

761 Palm Ave., Imperial Beach ..... 424-8169  
(See our Ad. under Furniture)

#### APPLIANCE SALES & SERVICE

##### ALLIED APPLIANCE CENTER

1816 Highland Ave., National City ..... 477-1242  
(See our Ad. under this Classification)

##### BENNETT'S SERVICE — MAYTAG SALES & SERVICE

355 Broadway, Chula Vista ..... 422-0202

##### HINKLES APPLIANCE

332 3rd Ave., Chula Vista ..... 422-0134  
(See our Ad. under this Classification)

##### PALM APPLIANCE SERVICE

1180 Palm Ave., Imperial Beach ..... 424-6003  
(See our Ad. under this Classification)

#### APPLIANCES—USED

##### OWEN FURNITURE

110 Broadway, Chula Vista ..... 420-5086  
996 National Ave., Chula Vista ..... 427-4242  
(See our Ad. under Furniture, New & Used)

### SMALL APPLIANCE REPAIRS

All Work  
Guaranteed

#### ALLIED APPLIANCE CENTER

EXPERT - RELIABLE - QUICK  
ALL HOUSEHOLD APPLIANCES  
RADIOS & ELECTRICAL TOOLS  
VACUUM SPECIALIST

1816 HIGHLAND

NATIONAL CITY

Sales  
New/Used

477-1242

#### FACTORY AUTHORIZED SALES & SERVICE

ADMIRAL - SPEED QUEEN - SUNRAY

FEDDERS - KITCHENAID

#### HINKLE'S APPLIANCE

SALES - SERVICE - RENTALS

NEW & USED

24-HR EMERGENCY SERVICE

332 3RD AVE.,

CHULA VISTA

422-0134

### *palm appliance*

SALES RENTALS SERVICE

PH: 424-6003

IMPERIAL BEACH RADIO DISPATCHED

## 2500 APARTMENTS - 34 LOCATIONS - GREATER SAN DIEGO

A WARM WELCOME EXTENDED TO ALL NAVY PERSONNEL

STUDIOS - ALCOVES - 1 BEDROOM  
FURNISHED WITH UTILITIES

\$69.50 to \$85.

ONE - TWO - THREE BEDROOMS  
FURNISHED OR UNFURNISHED

\$80. to \$210.

# 276-3770



APARTMENT MANAGERS INCORPORATED

907 TURQUOISE STREET  
SAN DIEGO 92190 (714) 276-3770  
Property - Management - Operation - Maintenance

## WELCOME ABOARD

### PAT O'NEIL'S ROCKET BODY & PAINT SHOPS

2 CONVENIENT LOCATIONS

#### No. 1

430 E. 8TH  
PHONE  
477-2704



#### No. 2

1904 NAT'L. AV.  
PHONE  
477-5574

NATIONAL CITY, CALIFORNIA

FREE STORAGE 16 YRS. U.S.M.C.

## AQUARIUMS—AUTOMOBILE

### AUTO MACHINE SHOP

CHEELY'S AUTO PARTS  
45 Broadway, Chula Vista ..... 422-0141  
(See our Ad. under Auto Parts)

### AUTOMATIC TRANSMISSION SERVICE

MEDINA TRANSMISSION SERVICE  
140 Broadway, Chula Vista ..... 420-4163  
(See our Ad. under this Classification)

### AUTOMOBILE DEALER— OVERSEAS PURCHASE PLAN

WESTCOTT MOTORS INC.  
1509 National Ave., National City ..... 474-3377  
(See our Ad. under Automobile Dealers - Foreign Imports - Sports)

### AUTOMOBILE DEALERS—FOREIGN & SPORTS

WESTCOTT MOTORS INC.  
1509 National Ave., National City ..... 474-3377  
(See our Ad. under this Classification)

## AQUARIUMS—FISH & SUPPLIES

BIRDS OF PARADISE PET SHOP  
744 Emory (Between Post Office & Palm Ave.), Imp. Beach, 424-6106  
(See our Ad. under Pet Shop)

## ARTIST SUPPLIES

THE PAINT CENTER  
364 "F" St., Chula Vista ..... 422-1135  
(See our Ad. under Picture Frames)

## ARTS & CRAFTS

EVELYN'S DISPLAY  
313 Third Ave., Chula Vista ..... 422-9190  
(See our Ad. under this Classification)

## AUTO BODY & PAINTING

MARQUEZ BODY SHOP  
310 "K" St., Chula Vista ..... 420-5835  
(See our Ad. under this Classification)

ROCKET BODY & PAINT SHOPS  
430 E. 8th St., National City ..... 477-2704  
(See our Ad. under this Classification)

ROCKET BODY & PAINT SHOPS  
1904 National Ave., National City ..... 477-5574  
(See our Ad. above this Classification)

## AUTOMOBILE—BRAKE & WHEEL ALIGNMENT

NATIONAL FRAME & ALIGNMENT  
910 Roosevelt Ave., National City ..... 477-8308

## AUTO GLASS

MORRIE'S GLASS SHOP  
660 Broadway, Chula Vista ..... 422-2419

## AUTO INSPECTION STATION

FUSON'S GARAGE  
333 "F" Street, Chula Vista ..... 422-4272  
(See our Ad. under Auto Repair & Servicing) ..... 422-2647

## KINDLY PATRONIZE ADVERTISERS

## IN YOUR DIRECTORY

### AUTO PAINTING

### COLLISION REPAIRS

### MARQUEZ BODY SHOP

FREE INSURANCE ESTIMATES

310 "K" AT THIRD AVE. 420-5835 CHULA VISTA



140 BROADWAY CHULA VISTA 420-4163

## OVERSEAS PURCHASE PLAN

## WESTCOTT MOTORS INC.

Serving Import Buyers In The San Diego Area 15 Years.

MG, AUSTIN HEALEY, VOLVO, ROVER, JAGUAR

AND MOST OTHER IMPORTS

30TH & NATIONAL AVE., NATIONAL CITY, CALIF.

O.K. LARSEN MANAGER  
CDR USN (RET.)

474-3377

## EVELYN'S ARTS & CRAFTS SUPPLIES

COMPLETE PARTY ACCESSORIES & RENTALS  
WEDDINGS - SHOWERS - BIRTHDAYS - INVITATIONS  
ARTIFICIAL FLOWERS - CENTERPIECES  
HALLMARK PARTY ITEMS & PARTY PLANNING IDEAS  
FREE INSTRUCTIONS  
CHULA VISTA 422-9190

313 3RD



# AUTOMOBILE

## SERVICEMEN ONLY

# AUTO INSURANCE

MILITARY DRIVERS



\*PAY BY THE MONTH  
 \*BINDERS TO GET YOU ON BASE THE SAME DAY  
 \*NO. CALIF. LICENSE REQUIRED  
 \*SR 22 FILINGS MADE  
 \*FULL COVERAGE  
 \*FREE PARKING

### AUTO Storage

**\$5 per mo**



**SPECIAL SERVICE INSURANCE AGENCY**

**427-2662 427-2676**

40 THIRD AVE CHULA VISTA

IN NATIONAL CITY

*Complete*

## AUTO REPAIRS



- BRAKES
- TUNE-UPS
- TRANSMISSIONS
- MOTOR OVERHAULS
- ELECTRICAL • TERMS

## BKN Auto Service

TO PUT YOUR CAR IN GOOD HANDS CALL ...

PICK-UP & DELIVERY

**477-4125**

711 NATIONAL - NATIONAL CITY

PAY BY THE MONTH  
424 - 5158

**MAROLD C. WADLEY**

"COMPLETE INSURANCE SERVICE"  
AUTO - HOME LIFE

1228 PALM AVENUE IMPERIAL BEACH, CALIF. 92032

## AUTOMOBILE—INSURANCE

CALIFORNIA SPECIAL SERVICES INSURANCE AGENCY  
40 Third Ave., Chula Vista .....427-2662 — 427-2676  
(See our Ad. under this Classification)

MAROLD C. WADLEY  
1115 Palm Ave., Imperial Beach .....424-5158  
(See our Ad. above this Classification)

## AUTOMOBILE—REPAIRS & SERVICE

B.K.N. AUTO SERVICE  
711 National Ave., National City .....477-4125  
(See our Ad. under Automotive Repairs)

BALBOA DATSUN  
720 Broadway, Chula Vista .....420-0126  
(See our Ad. under Automobiles — New & Used)

BARKERS COMPLETE AUTO SERVICE  
3746 Main St., San Diego .....234-9964

FARNAM'S GARAGE & SERVICE  
340 Palm Ave., National City .....477-1407

FUSON'S GARAGE  
333 "F" Street, Chula Vista .....422-4272  
(See our Ad. under this Classification)


HENDRICKSON SERVICE  
77 Broadway, Chula Vista .....422-0372  
(See our Ad. under Service Stations)

JIM CLARK'S GARAGE  
600 Broadway, Chula Vista .....422-2846

JOHNNY'S GARAGE  
122 Del Monte, Otay .....427-1374  
(See our Ad. under this Classification)

NEIL'S AUTOMOTIVE SERVICE  
200 Palm Ave., Imperial Beach .....424-8124  
(See our Ad. under this Classification)

TAYLOR AUTO PARTS  
1835 Palm Ave., Imperial Beach .....423-2222  
(See our Ad. under Auto Parts & Supplies)



**OFFICIAL**  
**HEADLIGHT ADJUSTING STATION**  
**BRAKE ADJUSTING STATION**  
**MOTOR POLLUTION INSPECTION STATION**

"Your Doctor Of Motors Car Care Specialist"

333 "F" Street (Downtown Chula Vista) 422-4272 or 422-2647

## NEIL'S AUTOMOTIVE SERVICE

SINCE 1924

COMPLETE AUTOMOTIVE REPAIR  
 DOMESTIC PH: 424 - 8124 FOREIGN

200 PALM AVENUE IMPERIAL BEACH

# **AUTOMOBILE**

## **National City Towing & Storage**

24 HOUR SERVICE  
ALL CARS PUT ON BLOCKS  
BATTERIES CHARGED WHEN NEEDED  
Started once a week, or battery disconnected  
FREE TRANSPORTATION BACK TO REAM FIELD  
205 N. HIGHLAND 264-0111 NATIONAL CITY, CALIF.

## **AUTOMOBILE TOWING & STORAGE**

NATIONAL CITY TOWING & STORAGE  
205 N. Highland Ave., National City ..... 264-0111  
(See our Ad. above this Classification)

## **AUTOMOBILES—BODY & FENDER**

BROWN MOTORS INC.  
5 West 18th St., National City ..... 474-5521  
(See our Ad. in Map Section)

## **AUTOMOBILES—PARTS & SERVICE**

HELM BUICK  
363 "E" St., Chula Vista ..... 420-5313  
(See our Ad. under Automobiles—New & Used)

ACME CHEVROLET  
24th and National, National City ..... 477-2163  
(See our Ad. under Automobiles—New & Used)

BROWN MOTORS INC.  
5 West 18th St., National City ..... 474-5521  
(See our Ad. in Map Section)

MONTGOMERY WARD  
1100 Highland Ave., So. Bay Plaza, National City ..... 474-4661  
(See our Ad. under Base Map)

## **AUTOMOBILES—NEW & USED**

ACME CHEVROLET  
24th and National, National City ..... 477-2163  
(See our Ad. under this Classification)

BALBOA DATSUN  
720 Broadway, Chula Vista ..... 420-0126  
(See our Ad. above this Classification)

BROWN MOTORS, INC.  
5 West 18th St., National City ..... 474-5521  
(See our Ad. in Map Section)

**KINDLY PATRONIZE ADVERTISERS**

**IN YOUR DIRECTORY**

## **MATHIS USED CARS**

GOOD TRANSPORTATION CARS  
MOBILE HOME STORAGE AND TOWING  
TRAILER SUPPLYS AND SERVICE  
2585 MAIN CHULA VISTA 423-3001



## **JOHNNY'S GARAGE**

MOTOR OVERHAUL - AUTO REPAIRS - BRAKES  
OPEN EVERYDAY TILL AT LEAST 10:00 P.M.

122 DEL MONTE 427-1374 OTAY, CALIF.  
JOHNNY WARD OWNER-OPERATOR

YOUR SOUTH BAY AREA

## **DATSUN DEALER**

NEW! MOST POWERFUL  
ECONOMY IMPORT  
AUTOMATIC TOO!  
NEW & USED AUTOMOBILES  
IMPORTS - DOMESTIC

## **BALBOA AUTO SALES**

NAVY PERSONNEL WELCOME

Ph# 420-0126

720 Broadway

Chula Vista, California



IN THE HEART OF  
NATIONAL CITY'S  
"MIRACLE MILE" OF CARS

Authorized  
**SALES &  
SERVICE**

"Where Service Counts Most"

**477-2163**

Only "FREEWAY MINUTES" Away ..



24th & NATIONAL • NATIONAL CITY

## AUTOMOBILES—AUTO PARTS

474-1531

TOLL FREE 262-0747

# STANLEY

## DODGE - SIMCA

"START YOUR CREDIT WITH US"  
100% FINANCING - OPEN SUNDAY

2829 National Ave., - On National City's Miracle Mile Of Cars

# HELM BUICK

- NEW BUICKS
- NEW OPELS
- GUARANTEED USED CARS
- PARTS AND SERVICE
- GMAC AND BANK FINANCING

SAN DIEGO COUNTIES OLDEST BUICK DEALER

54 YEARS OF REPUTABLE SERVICE

PHONE

420 - 5313

363 "E" STREET

CHULA VISTA



**RYAN OLDSMOBILE CO.**

1935 National Ave., National City 92050 • 474-6431

## SOUTH BAY CHEVROLET CO.

NEW & USED AUTO'S

COMPLETE PARTS & SERVICE FACILITIES

801 BROADWAY, CHULA VISTA

420 - 5900



*City Motors*  
**FORD**  
P. O. BOX A  
1401 NATIONAL AVENUE  
NATIONAL CITY, CALIF. 92050

## AUTOMOBILE (Cont'd)

### CITY MOTORS FORD

1401 National Ave., National City ..... 477-2711 — 262-7565  
(See our Ad. under this Classification)

### FULLER FORD

760 Broadway, Chula Vista ..... 422-9222  
(See our Ad. in Map Section)

### HELM BUICK

363 "E" St., Chula Vista ..... 420-5313  
(See our Ad. under this Classification)

### RYAN OLDSMOBILE COMPANY

1935 National Avenue, National City ..... 474-6431  
(See our Ad. under this Classification)

### SOUTH BAY CHEVROLET CO.

801 Broadway at "K", Chula Vista ..... 420-5900  
(See our Ad. under this Classification)

### STANLEY DODGE INC.

2829 National Ave., National City ..... 474-1531  
(See our Ad. above this Classification)

## AUTOMOBILE—STORAGE

### ALTIG TOWING SERVICE

1760-B Palm Ave., Imperial Beach ..... 423-1878  
(See our Ad. under Auto Towing)

### AUTO STORAGE

2604 National Ave., National City ..... 477-8836  
(See our Ad. under this Classification)

### CALIFORNIA SPECIAL SERVICES INSURANCE AGENCY

40 Third Ave., Chula Vista ..... 427-2662 — 427-2676  
(See our Ad. under Automobile Insurance)

### NATIONAL CITY TOWING & STORAGE

205 N. Highland Ave., National City ..... 264-0111  
(See our Ad. under Automobile Towing & Storage)

## AUTOMOBILES—USED

### CHULA VISTA AUTO SALES

1515 Palm Ave., Imperial Beach ..... 423-0639  
(See our Ad. in Map Section)

### HELM BUICK

363 "E" St., Chula Vista ..... 420-5313  
(See our Ad. under this Classification)

### LUCKY MOTORS

711 Broadway, Chula Vista ..... 427-7111  
(See our Ad. above this Classification)

### STANLEY DODGE INC.

2829 National Ave., National City ..... 474-1531  
(See our Ad. under Automobiles, New)

### 5 STAR MOTORS

1175 Palm Ave., Imperial Beach ..... 424-323  
(See our Ad. under this Classification)

## AUTO PARTS & SUPPLIES

### BALBOA DATSUN

720 Broadway, Chula Vista ..... 420-011  
(See our Ad. under Automobiles — New & Used)





45 BROADWAY

# CHEELY'S AUTO PARTS

&  
RADIATOR SERVICE  
PARTS - EQUIPMENT - SUPPLIES  
COMPLETE MACHINE SHOP SERVICE  
STARTERS - GENERATORS EXCHANGE & REPAIR

422-0141

HOURS  
MON thru SAT  
8:00 A.M.  
TIL  
4:00 P.M.

CHULA VISTA

## AUTO PARTS & SUPPLIES (Cont'd)

BOB'S AUTO SUPPLY  
280 Palm, Imperial Beach ..... 423-0951  
(See our Ad. under this Classification)

CHEELY'S AUTO PARTS  
45 Broadway, Chula Vista ..... 422-0141  
(See our Ad. above this Classification)

FULLER FORD  
760 Broadway, Chula Vista ..... 422-9222  
(See our Ad. in Map Section)

TAYLOR AUTO PARTS  
1835 Palm Ave., Imperial Beach ..... 423-2223  
(See our Ad. under this Classification)

## AUTO RADIATOR REPAIRS

CHEELY'S AUTO PARTS  
45 Broadway, Chula Vista ..... 422-0141  
(See our Ad. under Auto Parts)

## AUTO SPEEDOMETER & CALIBRATION

TONY'S MOBIL SERVICE  
300 "E" Street, Chula Vista ..... 422-6294  
(See our Ad. under Service Station)

## AUTO SUPPLY STORES

ACE AUTO SUPPLY STORES  
730 Hiway 75, Imperial Beach ..... 424-3903  
(See our Ad. under this Classification)

## AUTO - BOAT - TRAILER

OPEN OR COVERED

## STORAGE

WEEK - MONTH - YEAR

PICK UP - DELIVERY SERVICE - COMPLETE REPAIR SERVICE

BATTERY - TIRE - MOTOR - SERVICED WEEKLY

TOWING SERVICE

WE WELCOME SERVICE PERSONNEL

REASONABLE RATES

**477-8836**

2604 NATIONAL AVENUE

NATIONAL CITY

## LUCKY MOTORS

WE FINANCE

E - 2 & UP 18 & UP

711 BROADWAY, CHULA VISTA

427-7110

## TAYLOR AUTO PARTS

GENERAL REPAIR - MACHINE & RADIATOR SHOPS  
AUTO REPAIR TOOLS FOR RENT

PH: 423 - 2223

1835 PALM AVENUE

IMPERIAL BEACH

## Bob's Auto Supply

SERVING SOUTH BAY SINCE 1941

COMPLETE MACHINE SHOP SERVICE

AUTOMOTIVE PARTS - ACCESSORIES - SUPPLIES

2280 PALM AVE. - IMPERIAL BEACH, CALIF.

PHONE 423-0951

PAT & MIKE HALE

## ACE AUTO SUPPLY STORES

NEW & REBUILT PARTS: DOMESTIC FOREIGN  
MUFFLERS-TAILPIPES-SHOCKS INSTALLED  
IMPERIAL BEACH = SAN DIEGO = LEMON GROVE

424 - 3901

234 - 3181

469 - 6147

# NO DOWN PAYMENT 5 STAR MOTORS

SERVICEMEN WELCOME

424-3232

424-6888

1175 PALM, I.B. CALIF.

INSTANT  
CREDIT

## AUTO—BEACH



**ALTIG**  
*Towing Service*  
INSIDE AUTO STORAGE



**423-1878**

24 HOUR WRECKER SERVICE

L. W. ALTIG, JR.

1760-B PALM AVENUE  
IMPERIAL BEACH, CALIF.

### AUTO TOWING

ALTIG TOWING SERVICE  
1760-B Palm Ave., Imperial Beach .....423-1878  
(See our Ad. above this Classification)

TONY'S MOBIL SERVICE  
300 "E" Street, Chula Vista .....422-6294  
(See our Ad. under Service Stations)

### AUTO UPHOLSTERY

FIT RITE AUTO TRIM  
3110 National Ave., National City .....474-6454  
(See our Ad. under this Classification)

NATIONAL CITY AUTO TRIM  
15 E. 5th St., National City .....474-3053

### *Fit - Rite Auto Trim*

Custom Seat Covers - Upholstering - Sport Tops  
TRAILER AWNINGS and CANVAS WORK  
NATIONAL CITY, CALIFORNIA  
3110 NATIONAL AVENUE 474-6454

### BARTENDERS COURSE

PROFESSIONAL TRAINING & JOB EXPERIENCE  
TERMS TO CREDIT - QUALIFIED PERSONS  
308 SPRECKELS BLDG., SAN DIEGO 233-6351  
10 A.M.-7 P.M. \$65. Special Rate for Servicemen

### WELCOME ABOARD STARK'S AWNING & UPHOLSTERY

TRAILER AWNINGS - BOAT COVERS  
TRUCK COVERS  
CUSTOM FABRICATING  
317 BROADWAY CHULA VISTA, CALIFORNIA  
422-7277 TURNER STARK



OPEN 24 HOURS  
**HILLTOP TOWING  
& USED AUTO PARTS**

2310 PALM AVENUE  
PHONE 423-3601

WE BUY JUNK CARS

DICK SKAR & SON  
OWNERS

IMPERIAL BEACH

## WEST AUTO WRECKERS



"One Of The Best  
Where Your Car Comes To Rest  
For Late Model Parts  
Call Lloyd Or Dan Street"

**TOP CASH PAID**  
FOR WRECKED VEHICLES

Toll Free Number **262-0737**

Take E St. Off 101 To Chula Vista  
Turn Right & Then South 1 Block  
296 W. BAY BLVD., CHULA VISTA

**420-6056**

### AUTO WRECKERS—FOREIGN

ACE FOREIGN AUTO WRECKERS  
222 West Bay Blvd., Chula Vista .....427-1888

HILLTOP TOWING & AUTO PARTS  
2310 Palm Ave., Imperial Beach .....423-3601  
(See our Ad. under this Classification)

WEST AUTO WRECKERS  
296 W. Bay Blvd., Chula Vista .....420-6056  
(See our Ad. above this Classification)

### AWNINGS

STARK'S AWNING & UPHOLSTERY  
317 Broadway, Chula Vista .....422-7277  
(See our Ad. under this Classification)

### BAKERY

SAM'S HOMEMADE CHEESE CAKE  
3202 Mission Blvd., Mission Beach .....488-7900  
(See our Ad. under this Classification)

### BANK

BANK OF AMERICA  
1101 Palm Ave., Imperial Beach .....424-3951  
(See our Ad. under this Classification)

### BARTENDER SCHOOL

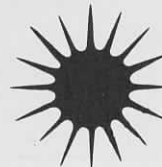
SAN DIEGO - IMPERIAL RESTAURANT & TAVERN ASSOC.  
308 Spreckels Bldg., San Diego .....233-6351  
(See our Ad. under this Classification)

### BEACH CYCLE CENTER

BEACH CYCLE CENTER  
706 Hiway 75, Imperial Beach .....423-1311  
(See our Ad. under Motorcycles—Sales & Service)

## SAM'S HOME MADE CHEESE CAKE

SERVED IN FINER RESTAURANTS  
THROUGHOUT SAN DIEGO  
ALSO AVAILABLE IN YOUR LOCAL MARKETS  
488 - 7900 276 - 5501



SUPPORT THE

ADVERTISERS

IN THIS DIRECTORY

424-9323

# Billie's Hair Fashions

Personalized Hair Cutting & Styling

"The Smartest Thing You Wear Is Your Hair"



## BEAUTY SALON

### BILLIE'S HAIR FASHIONS

1148 Palm Ave., Imperial Beach ..... 424-9323  
(See our Ad. above this Classification)

### RAFAELA'S FASHION COIFFEURS

2264 Palm Ave., Imperial Beach ..... 423-1342  
(See our Ad. under this Classification)

### PAULINE'S BEAUTY SALON

221 Dahlia Ave., Imperial Beach ..... 424-5992

## BEER & WINE

### LYDIA'S MEXICAN FOOD

1628 Palm Ave., Imperial Beach ..... 423-9914  
(See our Ad. under Restaurants)

## BICYCLES

### BICYCLEVILLE

755 Emory St., Imperial Beach ..... 424-5565  
(See our Ad. under this Classification)

## BICYCLE RENTALS & REPAIRS

### BICYCLEVILLE

755 Emory St., Imperial Beach ..... 424-5565  
(See our Ad. under Bicycles)

## BOAT STORAGE

### AUTO STORAGE

2604 National Ave., National City ..... 477-8836  
(See our Ad. under Auto Storage)

## BOWLING

### PLAZA BOWL

1201 Plaza Blvd., National City ..... 474-3301  
(See our Ad. under this Classification)

## BOWLING SUPPLIES

### MARTY'S BOWLING SERVICE

1528 Highland Ave., National City ..... 474-5479  
(See our Ad. under this Classification)

### PLAZA BOWL

1201 Plaza Blvd., National City ..... 474-3301  
(See our Ad. under Bowling)

## BOXES—WOODEN, PACKAGING & SERVICE

### CUSTOM BOX AND PALLET CO.

4678 Alvarado Canyon Road, San Diego ..... 281-3490

## BOYS & MENS CLOTHING

### DuVALL'S

817 Palm Ave., Imperial Beach ..... 424-8245  
(See our Ad. under Department Store)

## BRAKES

### SKINNER TIRE COMPANY

726 Broadway, Chula Vista ..... 420-5575  
(See our Ad. under Tires)

## BRAKE SERVICE

### BOWLIN SAFETY SERVICE

850 Broadway, Chula Vista ..... 422-4400  
(See our Ad. under Wheel Alignment)

### NEIL'S AUTOMOTIVE SERVICE

200 Palm Ave., Imperial Beach ..... 424-8124  
(See our Ad. under Automotive Repairs)

### RON SCHMIDT CHEVRON SERVICE

1103 13th St., Imperial Beach ..... 423-0363  
(See our Ad. under Service Stations)

## BUILDING CONTRACTOR

### CORKY McMILLEN—GENERAL CONTRACTOR

30 E. 24th Street, National City ..... 477-3179  
(See our Ad. under this Classification)

# BICYCLEVILLE

SALES • RENTALS

*Schwinn* • REPAIRS

SERVICE On All Bicycles

755 EMORY ST.

(ACROSS FROM POST OFFICE)

424-5565

IN NATIONAL CITY

BALLS FITTED, DRILLED & PLUGGED

IN OUR SHOP

BANKAMERICARD & CREDIT PLAN

1528 HIGHLAND AVENUE 474-5479

KINDLY PATRONIZE ADVERTISERS

IN YOUR DIRECTORY

*Rafaela's Fashion Coiffeurs*

"PERSONALIZED PERMANENTS"

HAIR STYLING AT BUDGET PRICES

PHONE 423-1342

2264 PALM AVENUE IMPERIAL BEACH, CALIF.

**PLAZA BOWL**

32 AMF AUTOMATIC LANES

COCKTAIL LOUNGE & DINING ROOM

ENTERTAINMENT NIGHTLY

1201 PLAZA BLVD. 474-3301 NATIONAL CITY

Serving Entire San Diego County

**GENERAL BUILDING CONTRACTOR**

**CORKY McMILLIN**

**LICENSED - INSURED**

- RESIDENTIAL - COMMERCIAL
- APARTMENTS
- REMODELING - ADDITIONS

NO JOB TOO LARGE OR TOO SMALL

Financing Arranged • Free Estimates

477-3179

EVENINGS CALL

479-0474

**CUSTOM BUILDING**

30 E 24TH

NATIONAL CITY



## BUILDING—COCKTAIL



### TOM THUMB LUMBER COMPLETE BUILDING SUPPLIES

422-9251  
1295 National Avenue Chula Vista, California

## BUILDING MATERIALS

TOM THUMB LUMBER  
1295 National Ave., Chula Vista ..... 422-9251  
(See our Ad. above this Classification)

## BUSINESS SERVICES

IMPERIAL CONSTANT COMMUNICATIONS  
1108 Palm Ave., Imperial Beach ..... 424-8145  
(See our Ad. under Telephone Answering Service)

## CANVAS PRODUCTS

STARK'S AWNING & UPHOLSTERY  
317 Broadway, Chula Vista ..... 422-7277  
(See our Ad. under Awnings)

## CATERING

CHICKEN DELIGHT NO. 10  
323 Third Ave., Chula Vista ..... 422-9238  
(See our Ad. under Restaurant)

## CLEANERS

MASTER CLEANERS  
5586 University Ave., San Diego ..... 582-2278  
(See our Ad. under this Classification)

NORGE LAUNDRY & CLEANING VILLAGE  
628 Palm Ave., Imperial Beach ..... 424-7149  
(See our Ad. under this Classification)

## CLUBS

OTAY WINCHESTER SHOOTING RANGES  
5350 Otay Valley Road ..... 420-5242  
(See our Ad. under Shooting Ranges)

422-8210

## Betty's Rainbow Room

426 BROADWAY - CHULA VISTA  
COCKTAILS PIANO BAR

## COCKTAIL LOUNGE

BETTYS RAINBOW ROOM  
426 Broadway, Chula Vista ..... 422-8210  
(See our Ad. above this Classification)

EL TAMPICO  
2229 Palm Ave., Palm City ..... 423-2601  
(See our Ad. under this Classification)

ERNIE'S HIDEAWAY  
1133 13th, Imperial Beach ..... 424-9000  
(See our Ad. under this Classification)

HUTCH'S  
1463 Palm Ave., Imperial Beach ..... 423-3478  
(See our Ad. under this Classification)

LITTLE VIENNA LOUNGE  
550 Highway 75, Imperial Beach ..... 424-6638  
(See our Ad. under this Classification)

MANHATTAN COCKTAIL LOUNGES  
400 Broadway, Chula Vista ..... 422-6641  
(See our Ad. under this Classification)

MCDINIS RESTAURANT  
105 E. 8th St., National City ..... 477-9030  
(See our Ad. under Restaurants)

MIYAKO SUKIYAKI  
2137 Pacific Highway, San Diego ..... 233-7161  
(See our Ad. under Restaurants)

PLAZA BOWL  
1201 Plaza Blvd., National City ..... 474-3301  
(See our Ad. under Bowling)

## NORGE

LAUNDRY AND CLEANING VILLAGE



YOUR FAMILY'S  
ONE - STOP  
FABRIC CARE  
CENTER

BRADSHAW'S SHOPPING CENTER  
628 PALM AVE., IMPERIAL BEACH 424-7179

## EL CAMINO MOTEL

PH: 424-3555

AND

LITTLE VIENNA COCKTAIL

PH: 424-6638

550 HIGHWAY 75

IMPERIAL BEACH

## Stan's CHULA ROOM

247 BROADWAY

CHULA VISTA

PEGGY CASH

at the Organ & Piano Bar

WED-THUR-FRI-SAT NITES 8 to 2

422-9875

## MASTER CLEANERS

72 LOCATIONS TO SERVE - YOU

SUIT - SHIRT AND SLACK RENTALS

15% DISCOUNT TO NAVY PERSONNEL

FOR FURTHER INFORMATION ON  
RENTAL PLAN CALL 582-2278

MAIN OFFICE

5582 UNIVERSITY



## Hutch's

. COCKTAILS  
. BEER  
. POOL

WHERE THE FLEET  
- MEETS -  
1463 PALM AVE.  
PH: 423-3479  
IMPERIAL BEACH

## ALOTTA'S

ITALIAN RESTAURANT

PIZZA AND ALL FOODS TO GO

. RAVIOLA . PIZZA . SPAGHETTI

. COCKTAILS 7 DAYS 10AM TILL 2AM

419 PALM NATIONAL CITY PH: 477-9834

## COCKTAIL—DEPARTMENT

### LOU VALLIN'S Silver Dollar

COCKTAILS

LUNCH & DINNER

CHARCOAL BROILER

341 3RD CHULA VISTA

RES PH: 422 - 4381

#### COCKTAIL (Cont'd)

##### THE CLOCK

285 Palm Ave., Imperial Beach ..... 424-5373  
(See our Ad. under this Classification)

##### SILVER DOLLAR

341 3rd St., Chula Vista ..... 422-4381  
(See our Ad. above this Classification)

##### SINGIN' SINNERS

308 3rd Ave., Chula Vista ..... 427-0011  
(See our Ad. under this Classification)

##### STAN'S CHULA ROOM

247 Broadway, Chula Vista ..... 422-9875  
(See our Ad. under this Classification)

##### SUNNYSIDE STEAK RANCH

5170 Bonita Rd., Sunnyside ..... 479-0426  
(See our Ad. under Restaurants)

#### CONCRETE

##### WESTERN STATES CONCRETE CAST STONE CO.

199 Mace St., Chula Vista ..... 427-2080  
(See our Ad. under this Classification)

#### DAIRIES

##### FOREMOST DAIRIES INC.

835 K St., San Diego ..... 239-3001

#### DECORATORS

##### HAAF'S

1309 Highland Ave., National City ..... 477-3129  
(See our Ad. under Furniture Dealers)

#### DEPARTMENT STORES

##### DuVALL'S

817 Palm Ave., Imperial Beach ..... 424-8245  
(See our Ad. under this Classification)

### El Tampico Cocktails

CHARCOAL BROILER

STEAKS & CHICKEN

2229 PALM AVE., PALM CITY

PHONE 423-9951

## ERNIE'S HIDEWAY

Cocktails

Draft Beer

JUST 2 BLOCKS FROM THE BASE

GAMES AND ENTERTAINMENT

NAVY WELCOME

13TH & CORANADO

PH: 424-9009

## The Clock

Cocktails - Dancing

DRAFT BEER

YOUR HOSTS

JOE and ANN

RETIRED NAVY

285 PALM AVENUE IMPERIAL BEACH 424 - 5373



## Singin' Sinners

COME WHERE THE FUN IS  
ENTERTAINMENT NIGHTLY  
COCKTAILS AND BEER

308 3RD AVENUE, CHULA VISTA

PH: 427 - 0011

## MANHATTAN

COCKTAILS - PIANO BAR

NICK STEPHENS

422-9930

400 BROADWAY

CHULA VISTA, CALIF.

WELCOME TO SAN DIEGO

## Western States Cast Stone Co.

CUSTOM PRECAST CONCRETE PRODUCTS

199 MACE STREET

427 - 2080



GEORGE R. BIESINGER

CHULA VISTA

#### NAME BRAND MERCHANDISE

1. Chic Lingerie
2. Kickaway
3. Exquisite Form
4. Hanes
5. Lord Scot
6. Levis
7. Buster Brown
8. Nanette
9. Cinderella

## Du Vall's

JR. DEPT. STORE

CLOTHING

FOR THE

ENTIRE FAMILY

FREE GIFT WRAPPING  
AMPLE PARKING

817 PALM AVE. IMPERIAL BEACH 424-8245

## DEPARTMENT—FOREIGN



### GOOD HEART CLEANERS

*"We Care For Your Uniform & Family Clothes"*

ALTERATIONS - DRY CLEANING - LAUNDRY

1566 3rd Ave. (4 min from Ream) 422 - 1688 - Chula Vista

### DEPARTMENT STORES (Cont'd)

MONTGOMERY WARD  
1100 Highland Ave., So. Bay Plaza, National City ..... 474-4661  
(See our Ad. under Base Map)

SEARS-ROEBUCK & COMPANY  
1290 Cleveland Ave., San Diego ..... 298-8111  
(See our Ad. in Map Section)

SEARS - ROEBUCK & COMPANY  
555 5th St., Chula Vista ..... 427-2100  
(See our Ad. in Map Section)

### DOG GROOMING

THE SILVER POODLE  
1031 C Ave., National City ..... 477-0202

### DRUG STORES

THE APOTHECARY SHOP  
501 3rd St., Chula Vista ..... 427-1444  
(See our Ad. under this Classification)

### DRY CLEANING & LAUNDRY

F & M UNIFORM SHOP  
1141 13th St., Imperial Beach ..... 423-0760  
(See our Ad. under Uniforms)

### DRY CLEANERS

GOOD HEART CLEANERS  
1566 Third Ave., Chula Vista ..... 422-1688  
(See our Ad. above this Classification)

HOLLY CLEANERS & LAUNDRY  
48 Broadway, Chula Vista ..... 422-6123

### EDUCATION

SAN DIEGO - IMPERIAL RESTAURANT & TAVERN ASSOC.  
308 Spreckels Bldg., San Diego ..... 233-6351  
(See our Ad. under Bartender School)

### ELECTRONIC SUPPLIES

HERB'S RADIO & TV SERVICE  
984 Broadway, Chula Vista ..... 420-8538  
(See our Ad. under Television)

SOS ELECTRONIC SUPPLY  
2615 Main St., Chula Vista ..... 424-1135  
(See our Ad. under this Classification)

### EMERGENCY ROAD SERVICE

HOWARD'S SHELL SERVICE  
1300 Coronado Ave., Imperial Beach ..... 424-7020  
(See our Ad. under Service Stations)

### ENGINE TUNE-UP

JOHNNY'S GARAGE  
122 Del Monte, Otay ..... 427-1374  
(See our Ad. under Automobile Repairs & Service)

### ENGINES—SALES & SERVICE

CHULA VISTA LAWNMOWER CO.  
478 3rd Ave., Chula Vista ..... 422-6767  
(See our Ad. under Lawn Mowers)

### EQUIPMENT RENTALS—TRUCKS, TRAILERS & EQUIPMENT

PACIFIC EQUIPMENT RENTAL  
Rentals—Trucks, Trailers and Equipment  
575 "C" Street, Chula Vista ..... 422-1149

### FLOOR POLISHERS

BROWN'S VACUUM SERVICE ..... 477-7777  
605 Highland Ave., National City ..... 477-0398  
(See our Ad. under Vacuum Cleaners)

### FOOD TO GO

B & H BAR AND GRILL  
903 1st St., Imperial Beach ..... 424-9337  
(See our Ad. under Restaurants)

CHICKEN DELIGHT NO. 10  
323 Third Ave., Chula Vista ..... 422-9328  
(See our Ad. under Restaurants)

FLAMINGO CAFE  
396 Broadway, Chula Vista ..... 422-9983  
(See our Ad. under Restaurants)

LUIGI'S  
902 Palm Ave., Imperial Beach ..... 424-3311 — 424-6606  
(See our Ad. under Restaurant)

LYDIA'S MEXICAN FOOD  
1628 Palm Ave., Imperial Beach ..... 423-9914  
(See our Ad. under Restaurants)

MARCO'S PIZZA  
763 Palm Ave., Imperial Beach ..... 424-3636  
(See our Ad. under Restaurants)

### FOREIGN CAR SERVICING

WESTCOTT MOTORS INC.  
1509 National Ave., National City ..... 474-3377  
(See our Ad. under Automobile Dealers - Foreign Imports - Sports)

### WHOLESALE PRICES TO THE PUBLIC

# SOS

## ELECTRONIC SUPPLY

NAME BRAND NEW TUBES,  
PARTS, ANTENNA SUPPLIES  
40% OFF LIST PRICE NAVY FAMILY'S FRIEND

GOOD WORKABLE USED PARTS  
FOR THE HOBBYIST AND DO IT YOURSELF  
TV - RADIO SERVICE - BLK & WHITE & COLOR

HOURS: MON-SAT 10AM-9PM

SUN - 10AM - 5PM

2615 MAIN ST.

CHULA VISTA (OTAY)

423-1135

DRUGS

PRESCRIPTIONS

A PROFESSIONAL PHARMACY

HAVE YOUR DOCTOR CALL US 427-1444

## the Apothecary shop

CORNER 3RD & H STREETS

CHULA VISTA



EASY  
TERMS*Owen*  
**FURNITURE**ROOM  
GROUPS**NEW-USED-REPOSSESSED****FURNITURE & APPLIANCES****110 BROADWAY, CHULA VISTA****PHONE 420-5086****FROZEN FOOD LOCKERS**PHD AMERICAN FROZEN FOODS INC.  
2035 National Ave., National City ..... 474-3371  
(See our Ad. under Meats)**FURNITURE**HAAF'S  
1309 Highland Ave., National City ..... 477-3129  
(See our Ad. under this Classification)HIGHLAND FURNITURE MART  
1231-1245 Highland Ave., National City ..... 477-4171  
(See our Ad. under this Classification)STAPLES-WYMORE FURNITURE STORES  
761 Palm Ave., Imperial Beach ..... 424-8169  
(See our Ad. under this Classification)**FURNITURE—NEW & USED**MONTGOMERY WARD  
1100 Highland Ave., So. Bay Plaza, National City ..... 474-4661  
(See our Ad. under Base Map)OWEN FURNITURE  
110 Broadway, Chula Vista ..... 420-5086  
996 National Ave., Chula Vista ..... 427-4242  
(See our Ad. above this Classification)**GARDENING—PLANTS & SUPPLIES**YOSHI'S NURSERY  
366 Broadway, Chula Vista ..... 422-5198  
(See our Ad. under Nursery)**GIRLS & LADIES CLOTHING**DuVALL'S  
817 Palm Ave., Imperial Beach ..... 424-8245  
(See our Ad. under Department Store)**GRILLS**SOUTH PACIFIC  
104 Coronado Ave., Imperial Beach ..... 424-9083  
(See our Ad. under Taverns)**GUNS**OTAY WINCHESTER SHOOTING RANGES  
5350 Otay Valley Road ..... 420-5242  
(See our Ad. under Shooting Ranges)**GYMS**YORKS HEALTH CLUB  
154 Palm Ave., Imperial Beach ..... 424-3024  
(See our Ad. under Health Clubs)**MODERN & MAPLE FURNITURE & APPLIANCES****HIGHLAND FURNITURE MART**

GOOD QUALITY — LOW PRICES

OUT-OF-STATE CREDIT OK

1245-1231 Highland Ave., National City 477-4171



477 - 3129

262 - 2884

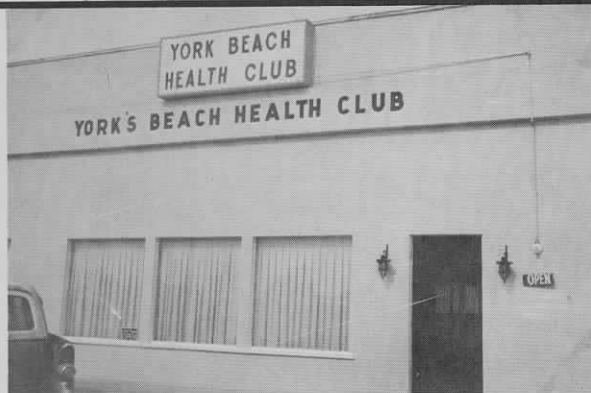
*Haaf's***Maple - Provincial  
- Spanish -**EXCLUSIVE STYLINGS  
EARLY AMERICAN — PROVINCIAL  
MEDITERRANEAN — SPANISH FURNITURE  
PERSONALIZED DECORATING SERVICE  
TERMS TO SUIT YOUR BUDGET

13TH &amp; HIGHLAND

NATIONAL CITY

**KINDLY PATRONIZE ADVERTISERS  
IN YOUR DIRECTORY****STAPLES - WYMORE****FURNITURE STORES**EASY TERMS — WE CARRY YOUR ACCOUNT  
761 PALM AVENUE IMPERIAL BEACH, CALIF.  
CHARLES E. WYMORE 424-8169

## HARDWARE—INTERIOR DECORATORS



**YORK'S BEACH HEALTH CLUB**

*Beautiful Your Body*

**Mens Day**  
Tues.  
Thur.  
Sat.

**Ladies Day**  
Mon., Wed  
Friday

**MEMBERSHIP DUES**  
\$75 YEAR, \$10 MONTH

**154 Palm Ave.**  
GYM 424-3024  
RES. 424-5511

**HEALTH CLUB**

Steam Bath-Sauna Bath  
Body Rebuilding  
Judo - Karate-Massage

### DECORATORS FARM

CORNER of 3rd AND Palm

**424-5827**

- DECORATING STUDIO  
All Furnishings For Your Home

- ANTIQUES

- USED FURNITURE

Complete Layout and Renderings

**EDYTHE MCNALLY OWNER**

MONDAY THRU SATURDAY 9:30 - 5:30  
SUNDAY 12 UNTIL 5:30



PHONE 422-1121

### CASTLE CENTER HARDWARE

SPORTING GOODS-HOUSEWARE  
GIFTS-TOOLS-GARDEN  
SUPPLIES-TOYS-PAINTS  
PLUMBING

1201 THIRD AVENUE

CHULA VISTA, CALIF. 92011

#### HARDWARE

CASTLE CENTER HARDWARE  
1201 Third Ave., Chula Vista ..... 422-1121  
(See our Ad. above this Classification)

#### HEALTH CLUBS

YORKS HEALTH CLUB  
154 Palm Ave., Imperial Beach ..... 424-3024  
(See our Ad. under Gyms)

#### HEATING

LOGAN PLUMBING & HEATING  
353 Third Ave., Chula Vista ..... 422-1137  
(See our Ad. under Plumbing)

#### HOME FOOD SERVICE

PHD AMERICAN FROZEN FOODS INC.  
2035 National Ave., National City ..... 474-3371  
(See our Ad. under Meats)

#### HOME FURNISHINGS

DECORATOR'S FARM  
679 Silver Strand Blvd., Imperial Beach ..... 424-5827  
(See our Ad. under this Classification)

#### HOME IMPROVEMENT

MONTGOMERY WARD  
1100 Highland Ave., So. Bay Plaza, National City ..... 474-4661  
(See our Ad. under Base Map)

#### HOMES

MAJESTIC HOMES  
373 "E" St., Chula Vista ..... 427-2010  
(See our Ad. under Apartments)

NEIL GRIMSLEY REAL ESTATE  
1108 Palm Ave., Imperial Beach ..... 424-8161  
(See our Ad. under Real Estate)

#### INSURANCE—AUTO

COREY - SLIFER & ASSOCIATES  
737 A Third Ave., Chula Vista ..... Bus. 420-5010  
Res. 422-9563  
(See our Ad. under Insurance—General)

MAROLD C. WADLEY INSURANCE  
1115 Palm Ave., Imperial Beach ..... 424-5158  
(See our Ad. under Automobile Insurance)

#### INSURANCE—AUTO & LIFE

CALIFORNIA SPECIAL SERVICES INSURANCE AGENCY  
40 Third Ave., Chula Vista ..... 427-2662 — 427-2676  
(See our Ad. under Automobile Insurance)

#### INSURANCE—COLLISION REPAIRS

MARQUEZ BODY SHOP  
310 "K" St., Chula Vista ..... 420-5835  
(See our Ad. under Automotive Body Repair)

#### INTERIOR DECORATORS

DECORATOR'S FARM  
679 Silver Strand Blvd., Imperial Beach ..... 424-5827  
(See our Ad. under Home Furnishings)

## CHULA VISTA LAWN MOWER CO.

AUTHORIZED  
SALES - SERVICE - PARTS - SHARPENING

**TORO**  
®

KING - O - LAWN  
McLANE & POWER TRIM EDGERS

(ENGINES)  
BRIGGS & STRATTON - CLINTON - KOHLER - TECUMSEN  
"WE SERVICE WHAT WE SELL"

478 3RD AVENUE CHULA VISTA 422-6767  
422-1773

## INSURANCE — LITHOGRAPHERS

## CHULA VISTA SPORT CYCLE & SCOOTER CO.

FACTORY AUTHORIZED

SALES - SERVICE - PARTS  
BRIDGESTONE MOTORCYCLES  
VESPA SCOOTERS  
MINI - BIKES



482 3RD AVE., CHULA VISTA

422-0807

### INSURANCE—GENERAL

COREY - SLIFER & ASSOCIATES  
"Insurance is our business, not a sideline."  
737 A Third Ave., Chula Vista ..... Bus. 420-5010  
Res. 422-9563  
(See our Ad. under this Classification)

### INSURANCE—HOME

COREY - SLIFER & ASSOCIATES ..... Bus. 420-5010  
737 A Third Ave., Chula Vista ..... Res. 422-9563  
(See our Ad. under Insurance — General)

### KIRBY VACUUM CLEANERS

KIRBY CO. OF CHULA VISTA  
319 Broadway, Chula Vista ..... 422-5381  
(See our Ad. under Vacuum Cleaners)

### LANDSCAPING

YOSHI'S NURSERY  
366 Broadway, Chula Vista ..... 422-5198  
(See our Ad. under Nursery)

### LAMPS

HAAF'S  
1309 Highland Ave., National City ..... 477-3129  
(See our Ad. under Furniture Dealers)

### LAUNDRIES

NORGE LAUNDRY & CLEANING VILLAGE  
628 Palm Ave., Imperial Beach ..... 424-7149  
(See our Ad. under Cleaners)

### LAWN & GARDEN SUPPLIES

WILBUR-ELLIS CO.  
Green Pride Lawn & Garden Products  
696 Naples St., Chula Vista ..... 422-3366

### LAWN MOWERS—SALES & SERVICE

O'QUINN'S LAWN EQUIPMENT  
2732 Highland Ave., National City ..... 474-3329

### LAWN MOWERS—SHARPENING & REPAIR

CHULA VISTA LAWN MOWER CO.  
478 3rd Ave., Chula Vista ..... 422-6767  
(See our Ad. above this Classification)

### LIFE INSURANCE

MAROLD C. WADLEY INSURANCE  
1115 Palm Ave., Imperial Beach ..... 424-5158  
(See our Ad. under Automobile Insurance)

### LIQUOR

CENTER LIQUORS, Carl W. Pope, (Ret. USN)  
Alpha Beta Shopping Center, 370 "F" St., Chula Vista ..... 422-1214  
(See our Ad. under this Classification)

### LITHOGRAPHERS

ATLAS LITHOGRAPH CO. INC.  
711 Columbia, San Diego ..... 234-7363  
(See our Ad. under Printers)

### LOANS

SEABOARD FINANCE COMPANY  
381 "E" Street, Chula Vista ..... 420-5200  
119 E. Eighth St., National City ..... 477-3157  
(See our Ad. under this Classification)

### LUMBER

TOM THUMB LUMBER  
1295 National Ave., Chula Vista ..... 422-9251  
(See our Ad. under Building Materials)

### MACHINE SHOP

BOB'S AUTO SUPPLY  
280 Palm, Imperial Beach ..... 423-0951  
(See our Ad. under Automotive Parts)

### ACE AUTO SUPPLY STORES

730 Hiway 75, Imperial Beach ..... 424-3903  
(See our Ad. under Auto Supply Stores)



**Away all bills**

**S. O. S. Seaboard for a loan.** Seaboard specializes in renting money to Naval personnel. For high priority service, telephone ahead for a personal (and top secret) appointment. You'll be surprised how low your monthly payments will be.

**SEABOARD FINANCE COMPANY**

A lifesaver when you need cash

**SAN DIEGO** - 3054-1/2 Clairmont Drive, Phone 276-3501  
6304 El Cajon Blvd., JU 2-4192; 4302 30th St., AT 1-6682  
1380 Garnet St. Suite A, 488-1061; 899 "C" St., 232-6601  
**CHULA VISTA** - 381 "E" Street, Phone 420-5200  
**EL CAJON** - 480 N. Magnolia St., Phone 442-4494  
**LEMON GROVE** - 3123 Imperial Ave., Ph. 463-9894  
**NATIONAL CITY** - 119 E. Eighth St., Ph. GR 7-3157



## MEATS—MOBILE



### Corey - Slifer & Associates

GENERAL INSURANCE

INSURANCE IS OUR BUSINESS  
NOT A SIDELINE

Auto Insurance For Military Personnel

OUR SPECIALTY

Competitive Rates—Reliable Companies  
MONTHLY BUDGET TERMS

CHAS. V. SLIFER - VERN M. COREY  
CARL L. WALL USN-RET

BUS: 420-5010  
RES: 422-9563

737 A THIRD AVENUE

CHULA VISTA, CALIF



## MEATS

BUTCHER OF SEVILLE  
396½ 3rd St., Chula Vista .....422-1383

PHD AMERICAN FROZEN FOODS INC.  
2035 National Ave., National City .....474-3371  
(See our Ad. under this Classification)

## MEATS—WHOLESALE

HOMER E. HAMILTON  
3410 F Ave., National City .....420-1008  
(See our Ad. under this Classification)

## USDA CHOICE MEATS



COMPLETE SERVICE FOR  
HOME FREEZERS

Meat Cutting - Packaging &  
SHARP FREEZING

Frozen Fruits & Vegetables  
Food Counselor Available

CALL

474-3371

BUDGET TERMS

NO MONEY DOWN

FREE DELIVERY



**AMERICAN**  
Frozen Foods, PHD

STAPLE ITEMS

FREEZER  
LOCKER  
SERVICE  
AVAILABLE

2035 NATIONAL

NATIONAL CITY

## HOMER E. HAMILTON

WHOLESALE — JOBBERS

PURVEYORS OF FINE MEATS

CATERING TO NAVY & MARINE INSTALLATIONS

3410 AVENUE

NATIONAL CITY

420-1008

## MICROPHONES & ACCESSORIES

WILLY'S ELECTRONIC SUPPLY CO.

1636 D Avenue, National City .....477-2119  
(See our Ad. under Television & Radio Parts)

## MINI BIKES

CHULA VISTA SPORT CYCLE & SCOOTER CO.

482 3rd Ave., Chula Vista .....422-0807  
(See our Ad. under Lawn Mowers)

## MOBILE HOME PARKS

HELENA MOBILE PARK

2626 Coronado Ave., Imperial Beach .....423-1616  
(See our Ad. under this Classification)

SILVER STRAND MOBILE VILLAGE

500 Hiway 75, Imperial Beach .....424-7988  
(See our Ad. under this Classification)

SIESTA MOBILE HOME PARK & SALES

409 Palm Ave., Imperial Beach .....424-8598  
(See our Ad. under this Classification)

## MOBILE HOME STORAGE

MATHIS USED CARS

2585 Main, Chula Vista .....423-3001  
(See our Ad. under Used Cars)

## MOBILE HOME TOWING

MATHIS USED CARS

2585 Main, Chula Vista .....423-3001  
(See our Ad. under Used Cars)



## Helena Mobile Park

2626 CORONADO AVE., IMPERIAL BEACH, CALIF.

COUNTRY LIVING IN THE CITY

## SILVERSTRAND MOBILE VILLAGE

500 HIGHWAY 75

PHONE: 424-7988

5 MINUTES TO REAM FIELD

MOST CONVENIENT PARK TO NORTH ISLAND,  
AMPHIBIAN BASE & CORONADO - CLOSE  
TO SAN DIEGO

- . ACCOMMODATING MOBILE HOMES TO 60 Ft.
- . Heated Swimming Pool - Nice Club House - 110-220 Wiring
- . Underground City Utilities - Natural Gas
- . Walking Distance to Shopping and Schools
- . Near Public Beaches and Fishing Pier - Limited Pets
- . Adult & Family Sections

IMPERIAL BEACH, CALIFORNIA

OWNER MANAGED

ROZ & BOB CONNELL

## MOTEL

- SANTA FE MOTEL**  
2135 National Ave., National City ..... 477-2930  
(See our Ad. under this Classification)
- CHULA VISTA SOUTH TRAVEL LODGE**  
1501 National Ave., Chula Vista ..... 422-8367  
(See our Ad. under this Classification)
- EL CAMINO MOTEL**  
550 Highway 75, Imperial Beach ..... 424-5355  
(See our Ad. under Motels)
- IMPERIAL BEACH TRAVEL LODGE**  
525 Hiway 75, Imperial Beach ..... 424-3916  
(See our Ad. under this Classification)
- SURFSIDE MOTEL**  
800 1st St., Imperial Beach ..... 424-5183  
(See our Ad. under this Classification)

## MOTEL—MOTORCYCLES



*Sleepy?*

HEATED POOL - SUN DECK  
ROOM PHONES - TELEVISION  
BEAUTY SHOP - CONNECTING ROOMS  
SELF-SERVICE LAUNDRY NEXT DOOR  
RESTAURANT

525 HIGHWAY 75,  
IMPERIAL BEACH, CALIF.  
92032  
(714) TEL: 424-3916

**TRAVELODGE**

## MOTORCYCLE—INSURANCE

- FLOYD EMDE COMPANY**  
1302 National Ave., National City ..... 474-1568  
(See our Ad. under Motorcycles—Sales & Service)

## MOTORCYCLE RENTALS

- BEACH CYCLE CENTER**  
706 Hiway 75, Imperial Beach ..... 423-1331  
(See our Ad. under this Classification)
- FLOYD EMDE COMPANY**  
1302 National Ave., National City ..... 474-1568  
(See our Ad. under Motorcycles—Sales & Service)

## MOTORCYCLES

- CHULA VISTA SPORT CYCLE & SCOOTER CO.**  
482 3rd Ave., Chula Vista ..... 422-0807  
(See our Ad. under Lawn Mowers)

## MOTORCYCLES—PARTS & SUPPLIES

- SUNNY ANGEL MOTORCYCLES**  
34 E. 18th St., National City ..... 477-8120  
(See our Ad. under Motorcycles Sales & Service)



**SURF-SIDE 6**

800 FIRST STREET  
IMPERIAL BEACH, CALIF.  
PHONE 424-5183

**ON THE OCEAN**

HEATED POOL  
BLOCK LONG ENCLOSED PRIVATE SANDY BEACH  
Fully equipped kitchens - Studios - Suites - and sleeping rooms  
OUR MOTEL IS OFF THE STREET, INSURING RESTFUL SLEEP

*Santa Fe Motel*

32 UNITS KITCHENS AVAILABLE  
MILITARY & FAMILY RATES - FREE TV & RADIO  
Minutes from Ream Field, Zoo and Tijuana  
2135 NATIONAL AVE. 477-2930 NATIONAL CITY

706 PALM 423-1331

"KAWASAKI MOTOR CYCLES"

**BEACH CYCLE CENTER**

\$\$\$AVESS IMPERIAL BEACH \$\$\$AVESS

REPAIRS

NEW & USED MOTORCYCLES

PARTS & ACCESS.

ALL MAKES

RENTALS





CHULA VISTA SOUTH

**TRAVELODGE**

TELEPHONE: 422-8367  
AREA CODE 714  
1501 NATIONAL AVENUE  
CHULA VISTA, CALIFORNIA

SHOT AND JEAN VOS  
MANAGING CO-OWNERS

KITCHENS - FAMILY UNITS - HEATED POOL  
BABY CRIBS - FREE TV - SWITCHBOARD  
"LOCATED LESS THAN 5 MIN. FROM REAM FIELD"

**CENTER LIQUORS**  
(ALPHABETA SHOPPING CENTER)

422-1214

CARL POPE 370 "F" STREET  
(Ret. U.S.N.) CHULA VISTA, CALIF.

**SIESTA**

MOBILE HOME PARK & SALES

409 PALM AVE., IMPERIAL BEACH, CALIF.

OWNER MANAGED BY PHONE 424-8598  
MR. & MRS. E. R. WHEELER TRAILERING SINCE 1941

**KINDLY PATRONIZE ADVERTISERS  
IN YOUR DIRECTORY**

## MOTORCYCLES—PET SHOP

*Sunny Angel*

**MOTORCYCLES**



NORTON - DUCATI  
MATCHLESS - MOTO - GUZZI  
NSU  
NEW & USED  
EXPERT REPAIRS ON ALL MAKES  
PICK-UP & DELIVERY  
CLOSED SUNDAY & MONDAY  
PARTS ACCESSORIES TIRES  
34 E. 18TH ST. NATIONAL CITY  
477-8120

## MOTORCYCLES—SALES & SERVICE

BEACH CYCLE CENTER  
706 Hiway 75, Imperial Beach ..... 423-1331  
(See our Ad. under Motorcycle Rentals)

FLOYD EMDE COMPANY  
1302 National Ave., National City ..... 474-1568  
(See our Ad. under this Classification)

SUNNY ANGEL MOTORCYCLES  
34 E. 18th St., National City ..... 477-8120  
(See our Ad. above this Classification)

## PET SHOP

POODLES IN IMPERIAL BEACH  
POODLES ACCESSORIES & GROOMING SUPPLIES  
SMALL PETS—FISH—BIRD & SUPPLIES - OPEN SUNDAY 11AM TO 3:00 PM  
Birds Of Paradise Pet Shop ..... GROOMING  
744 EMORY (BETWEEN P.O. & PALM AVE) ..... 424-6106



**Yoshi's Nursery**

Everything for the Garden

366 BROADWAY CHULA VISTA

DEL JOHNSTON  
MANAGER

PHONE 422-5198

# Kām·chat'ka

DISTRIBUTED BY — THE ALFRED HART COMPANY  
80 PROOF — 100% GRAIN NEUTRAL SPIRITS

## PICK UP SHOP

NEW AND USED FURNITURE  
BOUGHT AND SOLD  
STOVES—REFRIDGERATORS—TELEVISIONS  
123 Palm West On Palm To 1st Street

IMPERIAL BEACH

424-8829

## MOTOR TUNE-UP & REPAIR

HOWARD'S SHELL SERVICE  
1300 Coronado Ave., Imperial Beach ..... 424-7020  
(See our Ad. under Service Stations)

## MOVING & STORAGE

T & D TRANSFER & STORAGE  
345 "K" Street, Chula Vista ..... 422-1143

## MUFFLER, SHOCKS & TAIL PIPE INSTALLATION

ACE AUTO SUPPLY STORES  
730 Hiway 75, Imperial Beach ..... 424-3903  
(See our Ad. under Auto Supply Stores)

## MUSIC—MUSICAL INSTRUMENTS

HARPERS MUSIC STORE  
380 3rd Ave., Chula Vista ..... 422-4405

## NEW & USED FURNITURE

PICK UP SHOP  
123 Palm Ave., Imperial Beach ..... 424-8829  
(See our Ad. above this Classification)

## NURSERY

YOSHI'S NURSERY  
366 Broadway, Chula Vista ..... 422-5198  
(See our Ad. under this Classification)

## NURSERY SCHOOLS

TINY TIM'S KINDERGARTEN & NURSERY SCHOOL  
478 Moss St., Chula Vista ..... 422-2736 or 427-8275  
(See our Ad. under this Classification)

## PAINT & PAINT SUPPLIES

THE PAINT CENTER  
364 "F" St., Chula Vista ..... 422-1135  
(See our Ad. under Picture Frames)

## PARTY ACCESSORIES

EVELYN'S DISPLAY  
313 Third Ave., Chula Vista ..... 422-9190  
(See our Ad. under Arts & Crafts)

## PET SHOP

BIRDS OF PARADISE PET SHOP  
744 Emory (Between Post Office & Palm Ave.), Imp. Beach, 424-6106  
(See our Ad. under this Classification)

Service Men Financed  
12 MOS. 12,000 Warranty

# FLOYD EMDE CO.

SUZUKI MOTORCYCLES

100% Financing  
Available



250cc X-6 SCRAMBLER

## 3 LOCATIONS TO SERVE YOU

- 1302 NATIONAL AVE., NATIONAL CITY ..... 474-1568
- 5476 EL CAJON BLVD., SAN DIEGO ..... 286-1611
- 929 COLUMBIA ST., SAN DIEGO ..... 232-2948

## SALES - RENTALS - SERVICE - INSURANCE - STORAGE



# PHARMACY—PRINTERS



## LOGAN PLUMBING & HEATING

REPAIRS — ALTERATIONS — REPIPING  
WATER HEATERS — GARBAGE DISPOSALS — WATER SOFTENERS  
RADIO DISPATCHED EMERGENCY REPAIRS  
POWER SEWER SERVICE  
CHULA VISTA

353 THIRD AVENUE

422-1137

### PHARMACY

THE APOTHECARY SHOP  
501 3rd St., Chula Vista ..... 427-1444  
(See our Ad. under Drug Stores)

### PICTURE FRAME

THE PAINT CENTER  
364 "F" St., Chula Vista ..... 422-1135  
(See our Ad. under this Classification)

### PIZZA

LUIGI'S  
902 Palm Ave., Imperial Beach ..... 424-3311 — 424-6606  
(See our Ad. under Restaurant)

LEFTY'S PIZZA PARLOR NO. 2  
831 E. 8th, National City ..... 474-4447

MARCO'S PIZZA  
763 Palm Ave., Imperial Beach ..... 424-3636  
(See our Ad. under Restaurants)

SHAKY'S PIZZA PARLOR  
825 Broadway, Chula Vista ..... 427-3222  
(See our Ad. under this Classification)

### PLUMBING

LOGAN PLUMBING & HEATING  
353 Third Ave., Chula Vista ..... 422-1137  
(See our Ad. above this Classification)

### PRESCRIPTIONS

THE APOTHECARY SHOP  
501 3rd St., Chula Vista ..... 427-1444  
(See our Ad. under Drug Stores)

### PRINTERS

ATLAS LITHOGRAPH CO. INC.  
711 Columbia, San Diego ..... 234-7363  
(See our Ad. under this Classification)

IN CHULA VISTA  
CUSTOM  
PICTURE FRAMING  
422-1135



THE PAINT CENTER

364 "F" STREET

CHULA VISTA

## WELCOME ABOARD

ATLAS LITHOGRAPH CO. INC.  
PRINTERS OF THE REAM ECHO  
711 COLUMBIA ST. SAN DIEGO 234-7363

IN CHULA VISTA

## NURSERY SCHOOL

EDUCATION FOR THE YOUNG CHILD

KINDERGARTEN - PRE-KINDERGARTEN  
NURSERY

SMALL GROUPS — INDIVIDUAL GUIDANCE  
AGES 2½ - 7

HALF OR FULL DAY SESSIONS

- ✓ COMPLETE EDUCATIONAL PROGRAM
- ✓ PHYSICAL - MENTAL AND SOCIAL ATTITUDES DEVELOPED
- ✓ TRANSPORTATION AVAILABLE



422-2736  
Res 427-8275

478 MOSS STREET  
BETWEEN 4TH & 5TH

CREDENTIALLED  
KINDERGARTEN TEACHER  
MEMBERS OF THE NATL ASSOC  
EDUCATION YOUNG CHILDREN  
& PRE SCHL ASSOC. OF CALIF.

TINY TIM'S  
KINDERGARTEN &  
NURSERY SCHOOL

## Shakey's

Pizza  
PARLOR

& Ye Public House



BLACK  
BAYARIAN  
BEER



Phone In Your  
Order For  
Pick Up Or  
Eat It Here

BANQUET ROOMS AVAILABLE — COME AS YOU ARE  
"If Your Pizza Is Perfection, It's From Shakey's"  
— 21 VARIETIES WITH ROBUST DELICACIES —

HONKY TONK

YOUR FAMILY FUN  
PLACE  
PIANO/BANJO NIGHTLY

RAGTIME

SERVING MILITARY PERSONNEL AND THEIR  
DEPENDENTS IN THE SOUTH BAY AREA  
427-3222

"A PIZZA'S THROW FROM REAM FIELD"

325 BROADWAY CHULA VISTA

## RADIATOR—RENTALS

### Kinsella and Warren

SALES, RENTALS,  
PROPERTY MANAGEMENT.

SPECIALISTS IN VA,  
FHA, & CAL - VET FINANCING

### VA APPROVED SALESBROKER

495 PALM AVENUE  
IMPERIAL BEACH, CALIF.

PHONE 424-8626  
ANY TIME



### RADIATOR REPAIRS

TAYLOR AUTO PARTS  
1835 Palm Ave., Imperial Beach ..... 423-2223  
(See our Ad. under Auto—Parts & Supplies)

### RADIO—SALES & SERVICE

HERB'S RADIO & TV SERVICE  
984 Broadway, Chula Vista ..... 420-8538  
(See our Ad. under Television)

SCOTTY MAGNAVOX CENTER  
740 East 8th St., National City ..... 474-3338 — 262-1548  
(See our Ad. under Television—Sales & Service)

### REAL ESTATE

CHULA VISTA REALTY INC.  
580 3rd Ave., Chula Vista ..... 420-7030  
(See our Ad. under this Classification)

GOLDEN STATE REALTY  
5511 El Cajon Blvd., San Diego ..... 583-4040  
(See our Ad. on Inside Front Cover)

NEIL GRIMSLEY REAL ESTATE  
1108 Palm Ave., Imperial Beach ..... 424-8161  
(See our Ad. under this Classification)

JIM LEADINGHAM REALTY  
1138 Palm Ave., Imperial Beach ..... 424-5191  
(See our Ad. under Rentals)

MAJESTIC DEVELOPMENT INC. (CREASER & WARWICK)  
406 3rd Ave., Chula Vista ..... 420-1070  
(See our Ad. under Apartments)

### REALTORS

KINSELLA & WARREN REALTORS  
495 Palm Ave., Imperial Beach ..... 424-8626  
(See our Ad. above this Classification)

### CHULA VISTA REALTY INC. REALTORS

SERVING  
SOUTH BAY AREA  
SPECIALISTS IN  
HOMES — ACREAGE — COMMERCIAL  
EXCHANGES — INDUSTRIAL — LEASES  
BUSINESS OPPORTUNITY  
PROPERTY MANAGEMENT

530 3RD AVE., CHULA VISTA 420-7030

### RECREATION

JANAL ROCKET ROLLER RINK  
1770 Palm Ave., Imperial Beach ..... 423-2622  
(See our Ad. under Roller Skating & Instructions)

### REFRIGERATION

HINKLES APPLIANCE  
332 3rd Ave., Chula Vista ..... 422-0134  
(See our Ad. under Appliance Sales & Service)

### REFRIGERATION & APPLIANCE SERVICE

REFRIGERATION & APPLIANCE SERVICE  
219 Landis Ave., Chula Vista ..... 422-0642  
(See our Ad. under this Classification)

### RENTALS

CHULA VISTA REALTY INC.  
580 3rd Ave., Chula Vista ..... 420-7030  
(See our Ad. under Real Estate)

JIM LEADINGHAM REALTY  
1138 Palm Ave., Imperial Beach ..... 424-5191  
(See our Ad. under this Classification)

KINSELLA & WARREN REALTORS  
495 Palm Ave., Imperial Beach ..... 424-8626  
(See our Ad. under Realtors)

### RENTALS—APPLIANCES

PALM APPLIANCE SERVICE  
1180 Palm Ave., Imperial Beach ..... 424-6003  
(See our Ad. under Appliances)

IN CHULA VISTA  
SINCE 1947  
SERVING THE SOUTH BAY AREA  
**WASHING MACHINES  
REPAIRING—PARTS**  
**ALL MAKES & MODELS**  
**FACTORY FRANCHISED SERVICE**  
ON **RCA WHIRLPOOL** APPLIANCES  
**DRYERS - DISHWASHERS - RANGES**  
**USED APPLIANCES**

**422-0642**

**Thank You  
For Considering Us**

**Refrigeration and Appliance  
Service**

219 LANDIS

CHULA VISTA



### NEIL GRIMSLEY REAL ESTATE (Serving Ream Field)

1106 PALM AVENUE  
IMPERIAL BEACH, CALIFORNIA  
PHONE 424-8161

Exclusive Agents

SINCE 1956  
WENHE CONSTRUCTION INC.  
PHONE 423-3565

**HOMES  
by  
WENHE**

*Luigis*

*Luigis*

*Luigis*

FAMOUS ITALIAN FOODS

**CHICKEN - SHRIMP - VEAL - STEAKS - CHOPS**

FAST FREE DELIVERY **424-3311 • 424-6600** FAST FREE DELIVERY

50 ASSORTED DINNERS TO CHOOSE FROM

WE DELIVER LUNCHES TOO!

902 PALM AVENUE

IMPERIAL BEACH

# REMODELING

CORKY McMILLEN—GENERAL CONTRACTOR  
30 E. 24th Street, National City ..... 477-3179  
(See our Ad. under Building Contractors)

# RESTAURANTS

B & H BAR AND GRILL  
903 1st St., Imperial Beach ..... 424-9337  
(See our Ad. under this Classification)

CHICKEN DELIGHT NO. 10  
323 Third Ave., Chula Vista ..... 422-9238  
(See our Ad. under this Classification)

CHULA VISTA MUNICIPAL GOLF COURSE RESTAURANT  
4575 Bonita Rd., Chula Vista ..... 479-4144  
(See our Ad. under this Classification)

EL TAMPICO  
2229 Palm Ave., Palm City ..... 423-9951  
(See our Ad. under Cocktail Lounges)

FLAMINGO CAFE  
396 Broadway, Chula Vista ..... 422-9983  
(See our Ad. under this Classification)

"JALISCO" CAFE  
1669 Palm Ave., Imperial Beach ..... 423-3833  
(See our Ad. above this Classification)

LUIGI'S  
902 Palm Ave., Imperial Beach ..... 424-3311 — 424-6606  
(See our Ad. above this Classification)

## "Jalisco" Cafe

SPECIALIZING IN MEXICAN FOOD

REAL MEXICAN STYLE

WE SERVE BEER

ORDERS TO GO

THURS - FRI - SAT: OPEN TO 3:00 A.M.

1669 PALM AVE., PH: 423-3833

IMPERIAL BEACH

"Don't Cook Tonight — Call Chicken Delight"



NEAREST TO REAM FIELD IN  
323 THIRD AVE. CHULA VISTA 422-9238

## B AND H BAR AND Grill

IN IMPERIAL BEACH

STEAKS-TACOS-BURRITOS

BEER AND FOOD TO GO

ALL NAVY PERSONNEL WELCOME

903 1ST STREET

PH: 424-9337

## FLAMINGO CAFE

OPEN 24 HOURS

FOOD PACKED FREE TO GO

396 BROADWAY, CHULA VISTA 422-9983

FOR PERSONAL SERVICE

**JIM LEADINGHAM REALTY**

REALTOR - MULTIPLE LISTING

**SALES - RENTALS - MANAGEMENT**

V.A. APPROVED SALES BROKER

SERVING CHULA VISTA AND IMPERIAL BEACH

WITH RETIRED NAVY SALES STAFF

"ALL CORRESPONDENCE PROMPTLY ANSWERED"

TELEPHONE: 424-5191

1138 PALM AVE., IMPERIAL BEACH; CALIF 92032

CHULA VISTA MUNICIPAL GOLF COURSE

**RESTAURANT**

Cocktails

PICTURESQUE VIEW

BANQUET FACILITIES FOR ALL

OCCASIONS FROM 20 to 200

FOR RESERVATION CALL

JACK THOMAS

4575 BONITA ROAD

479-4144

CHULA VISTA



## RESTAURANTS—SERVICE

### Marco's - Pizza - Restaurant

ITALALIAN AND AMERICAN CUSINE  
FOOD TO GO - NO WAITING  
WINE - CHAMPAGNE - BEER

763 PALM, IMPERIAL BEACH

424 - 3636

### RESTAURANTS (Cont'd)

LYDIA'S MEXICAN FOOD  
1628 Palm Ave., Imperial Beach ..... 423-9914  
(See our Ad. under this Classification)

MARCO'S PIZZA  
763 Palm Ave., Imperial Beach ..... 424-3636  
(See our Ad. above this Classification)

McDINIS RESTAURANT  
105 E. 8th St., National City ..... 477-9038  
(See our Ad. under this Classification)

MIYAKO SUKIYAKI  
2137 Pacific Highway, San Diego ..... 233-7168  
(See our Ad. in Map Section)

RED FOX STEAK HOUSE  
2223 El Cajon Blvd., San Diego ..... 297-1313  
(See our Ad. in Map Section)

SHAKY'S PIZZA PARLOR  
825 Broadway, Chula Vista ..... 427-3222  
(See our Ad. under Pizza Parlor)

SILVER DOLLAR  
341 3rd St., Chula Vista ..... 422-4381  
(See our Ad. under Cocktails)

SUNNYSIDE STEAK RANCH  
5170 Bonita Rd., Sunnyside ..... 479-0426  
(See our Ad. above this Classification)

### RESTURANT SUPPLY

HOMER E. HAMILTON  
3410 F Ave., National City ..... 420-1008  
(See our Ad. under Meats — Wholesale)

COURTESY IS CONTAGIOUS AT

### Mc Dinis Restaurant

IRISH COFFEE - CORNED BEEF - IMPORTED BEERS  
MEMBER FOOD SERVICE EXECUTIVES ASSOC. INC.  
105 E. 8th ST., NATIONAL CITY PH: 477 - 9038

### JANAL ROCKET ROLLER RINK

1770 PALM AVENUE  
IMPERIAL BEACH, CALIFORNIA  
PH: 423-2622

— REGULAR SESSIONS  
TUES, WED, THUR &  
SUN EVES, 7:00 - 10:00  
SAT & SUN MAT  
~ 1:00 - 4:00  
FRI & SAT EVES  
~ 7:30 - 12:00  
SUPERVISED SESSIONS  
COMPLETE SNACK BAR  
CLASSES & PRIVATE INST.  
FUN & HEALTHFUL RELAXATION

### Sunnyside Steak Ranch

CHARCOAL BROILED STEAKS

Prime Rib Of Beef - Seafood - Frog Legs and Chicken  
COCKTAILS 479-0426 BANQUET FACILITIES  
5170 BONITA RD. SUNNYSIDE, 5 MI. EAST OF CHULA VISTA

### ROLLER SKATING & INSTRUCTIONS

JANAL ROCKET ROLLER RINK  
1770 Palm Ave., Imperial Beach ..... 423-2622  
(See our Ad. under this Classification)

### RUG & UPHOLSTERY CLEANERS

KIRBY CO. OF CHULA VISTA  
319 Broadway, Chula Vista ..... 422-5381  
(See our Ad. under Vacuum Cleaners)

### SCHOOLS

SAN DIEGO - IMPERIAL RESTAURANT & TAVERN ASSOC.  
308 Spreckels Bldg., San Diego ..... 233-6351  
(See our Ad. under Bartender School)

TINY TIM'S KINDERGARTEN & NURSERY SCHOOL  
478 Moss St., Chula Vista ..... 422-2736 or 427-8275  
(See our Ad. under Nursery Schools)

### SCOOTERS

CHULA VISTA SPORT CYCLE & SCOOTER CO.  
482 3rd Ave., Chula Vista ..... 422-0807  
(See our Ad. under Lawn Mowers)

### SEAT COVERS

FIT RITE AUTO TRIM  
3110 National Ave., National City ..... 474-6454  
(See our Ad. under Automotive Upholstery)

### SERVICE STATION

HENDRICKSON SERVICE  
77 Broadway, Chula Vista ..... 422-0372  
(See our Ad. under this Classification)

HOWARD'S SHELL SERVICE  
1300 Coronado Ave., Imperial Beach ..... 424-7020  
(See our Ad. under this Classification)

PAUL CROOKS RICHFIELD SERV. STATION  
655 Palm Ave., Imperial Beach ..... 424-3221  
(See our Ad. under this Classification)

### PAUL CROOK'S RICHFIELD SERVICE

AUTO REPAIRS—BRAKE SERVICE—FRONT END ALIGNMENT  
GOODYEAR TIRES—LUBRICATION—TUNE UP  
BATTERIES—MUFFLERS—TAIL PIPES—PARTS  
655 PALM, IMPERIAL BEACH PH: 424 - 3221

### Lydia's Mexican Food "Authentic Mexican Food" BEER - WINES

Inexpensive Family Dining Food To Go  
1628 PALM AVE. 423-9914

KINDLY PATRONIZE ADVERTISERS  
IN YOUR DIRECTORY

### HENDRICKSON SERVICE COMPLETE AUTO REPAIRS



X ENGINE REBUILDING X UNITED DELCO TUNE UP  
X TRANSMISSIONS X BRAKES SERVICE  
X WHEEL ALIGNMENT X ELECTRICAL SERVICE

422-0372

77 BROADWAY (3 BLKS. NO. OF 'E' STREET) CHULA VISTA

## BEACHCOMBER

*Fun, Games. Friendly Atmosphere.*

Shuffleboard Tourney Tues. Night.

Happy Hour Tues. 7:30 - 9:00 P.M.

Sick Call Sun. 9:00 - 11:00 A.M.

717 1st AVE., IMPERIAL BEACH 424 - 9017

### SERVICE STATIONS (Cont'd)

RON SCHMIDT CHEVRON SERVICE  
1103 13th St., Imperial Beach ..... 432-0363  
(See our Ad. under Service Stations)

TONY'S MOBIL SERVICE  
300 "E" Street, Chula Vista ..... 422-6294  
(See our Ad. above this Classification)

### SEWING MACHINES

CHULA VISTA SEWING & VACUUM CENTER  
292 Third Ave., Chula Vista ..... 420-0703  
(See our Ad. under this Classification)

### SHOOTING RANGES

OTAY WINCHESTER SHOOTING RANGES  
5350 Otay Valley Road ..... 420-5242  
(See our Ad. under this Classification)

### SPORTS SUPPLIES

HIGGINS & CROSTHWAITE SPORTS SUPPLY  
314 Center Street, Chula Vista ..... 420-3310

### STARTERS & GENERATORS

B.K.N. AUTO SERVICE  
711 National Ave., National City ..... 477-4125  
(See our Ad. under Automotive Repairs)

### STEREO COMPONENTS—WHOLE TO MILITARY

WILLY'S ELECTRONIC SUPPLY CO.  
1636 D Avenue, National City ..... 477-2119  
(See our Ad. under Television & Radio Parts)

### STEREO SALES

AERO SOUND AND TV  
23 Naples, Chula Vista ..... 420-1749  
(See our Ad. under Television & Radio—Sales & Service)

SCOTTY MAGNAVOX CENTER  
740 East 8th St., National City ..... 474-3338 — 262-1548  
(See our Ad. under Television—Sales & Service)

### SUIT SHIRT & SLACK RENTALS

MASTER CLEANERS  
5586 University Ave., San Diego ..... 582-2278  
(See our Ad. under Cleaners)

### TAILORS—MILITARY & CIVILIAN

F & M UNIFORM SHOP  
1141 13th St., Imperial Beach ..... 423-0760  
(See our Ad. under Uniforms)

## SERVICE—TAVERNS

### Tony's Mobil Service

Res.: 420-3946  
Bus.: 422-6294

SPEEDOMETER REPAIR AND CALIBRATION

TOWING SERVICE

AIR CONDITIONING SERVICE

TUNE UP AND CARBURETOR SERVICE

300 E STREET

ALL WORK GUARANTEED

CHULA VISTA, CALIF.

### TAVERNS

AL & HELENS BEACHCOMBER  
717 1st St., Imperial Beach ..... 424-9017  
(See our Ad. above this Classification)

B & H BAR AND GRILL  
903 1st St., Imperial Beach ..... 424-9337  
(See our Ad. under Restaurants)

ERNIE'S HIDEAWAY  
1133 13th, Imperial Beach ..... 424-9009  
(See our Ad. under Cocktail Lounges)

CHICO'S HIDEAWAY  
1314 3rd St., Chula Vista ..... 422-9698

SOUTH PACIFIC  
104 Coronado, Imperial Beach ..... 424-9083  
(See our Ad. under this Classification)

WHIRLY BIRD  
1495 13th St., Imperial Beach ..... 423-9938

### HOWARD'S SHELL SERVICE

"SERVING REAM FIELD FOR 16 YEARS"

MOTOR REPAIR, MUFFLER, EXHAUST PIPES & BRAKES  
MOTOR TUNE-UP-FLUSHING, STEAM CLEANING"  
1300 CORONADO AVENUE S&H GREEN STAMPS  
IMPERIAL BEACH, CALIFORNIA 424-7020

THE MOST SOUTHWESTERN INN  
IN THE UNITED STATES...

### South Pacific

HAMBURGERS & SANDWICHES  
MUSIC - POOL - GAMES

TED & JOYCE  
PHONE 424-9083

104 CORONADO AVE.  
IMPERIAL BEACH

### CHULA VISTA SEWING & VACUUM CENTER

AUTHORIZED DEALER FOR PFAFF

10% DISCOUNT TO ALL MILITARY PERSONNEL

292 3 AVE., CHULA VISTA 420-0703

TUNE UPS - WHEEL ALIGNMENTS  
BRAKE SERVICE - LUBRICATION

RONALD SCHMIDT

### CHEVRON SERVICE

WE WELCOME ALL REAM PERSONELL

1103 13TH STREET  
IMPERIAL BEACH

PHONE  
423-0363

PUBLIC TRAP & SKEET SHOOTING

### Otay Winchester Shooting Range

GUNS & AMMO AVAILABLE - NIGHT SHOOTING

FREE INSTRUCTIONS

MODERN CLUB HOUSE

& PLAYGROUND

TUES THROUGH FRIDAY 2 TO 10 P.M.

SATURDAY SUNDAY & HOLIDAYS  
9 A.M. TO 8 P.M.

5350 OTAY VALLEY RD.

CHULA VISTA

420-5242



## TAXI—TELEVISION



**DIAMOND  
CAB CO.**

**NATIONAL CITY**  
**SPRING VALLEY**  
**BONITA**

**SERVING**  
**CHULA VISTA**  
**LEMON GROVE**  
**CASA DE ORO**

**PROMPT  
COURTEOUS  
SERVICE**

**24 HOUR  
SERVICE  
RADIO DISPATCHED  
474-1544**

### TELEPHONE ANSWERING SERVICE

WAKE UP SERVICE  
BUSINESS SERVICES  
PH: 424-8145  
IMPERIAL CONSTANT COMMUNICATIONS

**WESCO**  
WILLY'S ELECTRONICS SUPPLY

40% TO 60% DISCOUNT  
RADIO - TV TUBES & PARTS  
STEREO - HI FI SUPPLIES  
1636 'D' AVE. NATIONAL CITY, CALIF. PH: 477-2119

### CHULA VISTA TV-HI-FI CENTER

SPECIALISTS IN COLOR TV  
ALL WORK GUARANTEED  
DAY AND NIGHT CALLS... PHONE 422-6166  
695 3RD AVE. - OPEN 9-9 MON. - SAT.  
FREE ANTENNA ESTIMATES - SALES AND SERVICE  
CURTIS MATHES STEREO-TELEVISION  
RCA COLOR TV AND OTHER NAME BRANDS

### TAXI CAB

CARNATION CAB CO.  
1108 Palm, Imperial Beach ..... 423-1141  
(See our Ad. under this Classification)

DIAMOND CAB COMPANY  
2428 Granger St., Lincoln Acres ..... 474-1544  
(See our Ad. under this Classification)

IMPERIAL BEACH CAB  
Imperial Beach ..... 424-6212

RED CAB INC.  
P. O. Box 1202, San Ysidro ..... 648-1107

YELLOW CAB  
639 13th St., San Diego ..... 234-6161

### TELEPHONE ANSWERING SERVICE

IMPERIAL CONSTANT COMMUNICATIONS  
1108 Palm Ave., Imperial Beach ..... 424-8145  
(See our Ad. under this Classification)

### TELEVISION

WALTER TROOK RADIO & T.V.  
400 Third Ave., Chula Vista ..... 427-2454

### TELEVISION & RADIO PARTS—WHOLE. SUPPLIES

WILLY'S ELECTRONIC SUPPLY CO.  
1636 D Avenue, National City ..... 477-2119  
(See our Ad. under Television & Radio Parts)

### TELEVISION & RADIO—SALES & SERVICE

AERO SOUND AND TV  
23 Naples, Chula Vista ..... 420-1749  
(See our Ad. under this Classification)

### TELEVISION—SALES & SERVICE

CHULA VISTA TV - HI-FI CENTER  
695 3rd Ave., Chula Vista ..... 422-6166  
(See our Ad. above this Classification)

HERB'S RADIO & TV SERVICE  
984 Broadway, Chula Vista ..... 420-8538  
(See our Ad. under this Classification)

ALL WORK GUARANTEED - COLOR SPECIALISTS

### ACRO SOUND and TV

SERVICE AND SALES  
TV - STEREO - TAPE RECORDERS - AUTO RADIOS  
SOUTH BAY AREA 23 NAPLES CHULA VISTA, CALIF.  
PHONE 420-1749

### PROMPT 24 HOUR CAB SERVICE

**CARNATION Cab**

**423-1141**

RADIO DISPATCHED

SAFE

DEPENDABLE

ECONOMICAL







# THE MAGNIFICENT MAGNAVOX

740 E. 8th Street, National City

- COLOR TV
- STEREO
- RADIO

Tel. 474-3338

**TELEVISION—SALES & SERVICE (Cont'd)****SCOTTY MAGNAVOX CENTER**740 East 8th St., National City ..... 474-3338 — 262-1548  
(See our Ad. above this Classification)**TIRES****SKINNER TIRE COMPANY**726 Broadway, Chula Vista ..... 420-5575  
(See our Ad. under this Classification)**TOWING****HILLTOP TOWING & AUTO PARTS**2310 Palm Ave., Imperial Beach ..... 423-3601  
(See our Ad. under Auto Wreckers)**TRAILER PARKS****SIESTA MOBILE HOME PARK & SALES**409 Palm Ave., Imperial Beach ..... 424-8598  
(See our Ad. under Mobile Home Parks)**TRAILER STORAGE****AUTO STORAGE**2604 National Ave., National City ..... 477-8836  
(See our Ad. under Auto Storage)**TRANSMISSION REPAIRS****B.K.N. AUTO SERVICE**711 National Ave., National City ..... 477-4125  
(See our Ad. under Automotive Repairs)**MEDINA TRANSMISSION SERVICE**140 Broadway, Chula Vista ..... 420-4163  
(See our Ad. under Automatic Transmission Service)**TRANSMISSIONS & TOWING****WINSTONE'S TRANSMISSIONS & TOWING**731 G Ave., National City ..... Day, 477-5883  
Nite, 463-8977**TRAVEL AGENCY****SOUTH BAY TRAVEL CENTER**1007 Plaza Blvd., National City ..... 474-2206  
(See our Ad. under Airlines)**TRAVELODGE****IMPERIAL BEACH TRAVELODGE**525 Hiway 75, Imperial Beach ..... 424-3916  
(See our Ad. under Motels)**TROPHIES****MARTY'S BOWLING SERVICE**1528 Highland Ave., National City ..... 474-5479  
(See our Ad. under Bowling Supplies)**SOUTHWEST TROPHY & AWARD CO.**4251 Park Boulevard, San Diego ..... 296-6269  
(See our Ad. under this Classification)

## IN CHULA VISTA — Serving South Bay Area

# SKINNER H. I. TIRE CO.

## NEW & RETREADS.

(WE DO OUR OWN RETREADS)

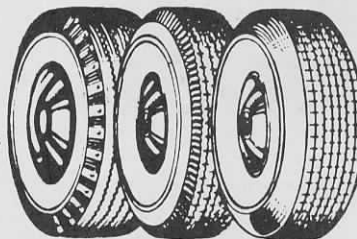
**Firestone** MILITARY DISCOUNTS**CARNEGIE**low prices —  
liberal trade-in allowances**RECAPPING — REPAIRS**  
Brakes — Balancing — Alignment

FOREIGN &amp; DOMESTIC

**8-HOUR SERVICE**

LOAN CARS AVAILABLE

Wholesale - Retail

OPEN ALL DAY SATURDAY  
BUDGET TERMS**420-5576**

726 BROADWAY IN CHULA VISTA

**HERB'S RADIO & TV SERVICE**

"IF SATISFIED, TELL YOUR FRIENDS" — "IF NOT, TELL US"

SALES AND SERVICE

ELECTRONIC SUPPLY — WHOLESALE &amp; RETAIL

DISCOUNTS FROM 10% TO 60%

HERB JAMES, OWNER BUS. PHONE 420-8538 984 BROADWAY  
HOME PHONE 427-1301 CHULA VISTA, CALIF.

## SOUTH BAY TRAVEL CENTER

MILITARY AND YOUTH FARES  
FOR FREE INFORMATION

CALL 474-2206

1007 PLAZA BLVD.  
NATIONAL CITYASK FOR "JOHNNY"  
LCDR — USNR

## Southwest

### TROPHY AND AWARD COMPANY

**FREE TROPHY ENGRAVING**

DESK SETS

ROSETTES

CUSTOM CLOCKS

PLAQUES

GAVELS

4251 Park Blvd., San Diego, California 92103  
(Corner of Park and El Cajon) Telephone 296-6269

## TROPICAL—WAKE



**Dual  
Sanitronic**

"WHERE THERE'S  
PRIDE  
THERE'S A KIRBY"

KIRBY COMPANY OF CHULA VISTA  
CALL FOR FREE HOME DEMONSTRATION

319 BROADWAY

422-5381

### TROPICAL FISH

MI-RIC  
1182 Palm Ave., Imperial Beach ..... 424-3035

### TUNE UPS

RON SCHMIDT CHEVRON SERVICE  
1103 13th St., Imperial Beach ..... 432-0363  
(See our Ad. under Service Stations)

### T.V. & APPLIANCES—NEW & USED

PICK UP SHOP  
123 Palm Ave., Imperial Beach ..... 424-8829  
(See our Ad. under Furniture—New & Used)

### T.V. & RADIO REPAIRS

SOS ELECTRIC SUPPLY  
2615 Main St., Chula Vista ..... 424-1135  
(See our Ad. under Electronic Supplies)

### UNIFORMS

F & M UNIFORM SHOP  
1141 13th St., Imperial Beach ..... 423-0760  
(See our Ad. under this Classification)

### UNIFORMS—BOWLING

MARTY'S BOWLING SERVICE  
1528 Highland Ave., National City ..... 474-5479  
(See our Ad. under Bowling Supplies)

### UNIONS

COOKS, WAITRESSES & HELPERS UNION LOCAL 402  
1020 8th Ave., San Diego ..... 239-9201  
(See our Ad. under Union)

WAITERS & BARTENDERS UNION LOCAL 500  
3911 Pacific Highway—Machinists' Bldg., San Diego ..... 297-0353  
(See our Ad. above this Classification)

### UPHOLSTERY

FIT RITE AUTO TRIM  
3110 National Ave., National City ..... 474-6454  
(See our Ad. under Automotive Upholstery)

STARK'S AWNING & UPHOLSTERY  
317 Broadway, Chula Vista ..... 422-7277  
(See our Ad. under Awnings)

## F & M NAVAL UNIFORM SHOP

1141 13th St. Imperial Beach, Calif.

New or Reissued Officers, CPOS, & Enlisted Uniforms

Complete Tailoring Department

Complete Line of

All Naval Insignia & Uniform Equipment

Rating Badges

Naval Speciality Marks

Prompt Mail Order Service

One Day Laundry & Dry Cleaning Service

**423-0760**

## WAITERS & BARTENDERS UNION LOCAL 500

297-0353

3911 PACIFIC HIGHWAY MACHINISTS BLDG.

COOKS, WAITRESSES & HELPERS UNION

239-9201

1020 - 8th. AVENUE

LOCAL 402

### USED APPLIANCES—SALES

REFRIGERATION & APPLIANCE SERVICE  
219 Landis Ave., Chula Vista ..... 422-0642  
(See our Ad. under Refrigeration & Appliance Service)

### USED AUTO PARTS

HILLTOP TOWING & AUTO PARTS  
2310 Palm Ave., Imperial Beach ..... 423-3601  
(See our Ad. under Auto Wreckers)

### WEST AUTO WRECKERS

296 W. Bay Blvd., Chula Vista ..... 420-6056  
(See our Ad. under Auto Wreckers)

### USED CARS

MATHIS USED CARS  
2585 Main, Chula Vista ..... 423-3001  
(See our Ad. under this Classification)

### USED FURNITURE

STAPLES-WYMORE FURNITURE STORES  
761 Palm Ave., Imperial Beach ..... 424-8169  
(See our Ad. under Furniture)

### OWEN FURNITURE

110 Broadway, Chula Vista ..... 420-5086  
996 National Ave., Chula Vista ..... 427-4242  
(See our Ad. under Furniture, New & Used)

### VACUUM CLEANERS

BROWN'S VACUUM SERVICE ..... 477-7777  
605 Highland Ave., National City ..... 477-0398  
(See our Ad. under this Classification)

### KIRBY CO. OF CHULA VISTA

319 Broadway, Chula Vista ..... 422-5381  
(See our Ad. above this Classification)

### VACUUM CLEANER SALES & SERVICE

ALLIED APPLIANCE CENTER  
1816 Highland Ave., National City ..... 477-1242  
(See our Ad. under Appliance Sales & Service)

### VACUUMS & SERVICE

DON'S VACUUM'S & APPLIANCES  
Sales & Service—Free Pickup & Delivery  
949 Broadway, Chula Vista ..... 420-5343

### WAKE UP SERVICE

IMPERIAL CONSTANT COMMUNICATIONS  
1108 Palm Ave., Imperial Beach ..... 424-8145  
(See our Ad. under Telephone Answering Service)

## Brown's Vacuum Service

FACTORY AUTHORIZED

HOOVER, EUREKA & OTHER MAKES  
NEW & RECONDITIONED CLEANERS  
BAGS & PARTS—SERVICE ALL MAKES

ALL WORK GUARANTEED  
605 HIGHLAND AVE., NATIONAL CITY, CALIF.  
477-7777 OR 477-0398

FRANK BROWN OWNER — U.S.N. RET.

**SUPPORT THE ADVERTISERS IN THIS DIRECTORY**



**Rayne**  
**WATER CONDITIONING**

RENTALS - SALES - SERVICE

SOUTH BAY  
965 F STREET  
CHULA VISTA  
420-6392

**WATER CONDITIONING**

RAYNE — SOUTH BAY  
965 F Street, Chula Vista ..... 420-6392  
(See our Ad. above this Classification)

**WATER SOFTENERS**

LOGAN PLUMBING & HEATING  
353 Third Ave., Chula Vista ..... 422-1137  
(See our Ad. under Plumbing)

**WASHING MACHINES—REPAIRING**

REFRIGERATION & APPLIANCE SERVICE  
219 Landis Ave., Chula Vista ..... 422-0642  
(See our Ad. under Refrigeration & Appliance Service)

**WHEEL ALIGNMENT**

BOWLIN SAFETY SERVICE  
850 Broadway, Chula Vista ..... 422-4400  
(See our Ad. above this Classification)

**NEIL'S AUTOMOTIVE SERVICE**

200 Palm Ave., Imperial Beach ..... 424-8124  
(See our Ad. under Automotive Repairs)

**SKINNER TIRE COMPANY**

726 Broadway, Chula Vista ..... 420-5575  
(See our Ad. under Tires)

**WATER—WIG**

10 YEARS SAME LOCATION  
IN CHULA VISTA  
**BRAKE SERVICE**  
INSTALLED - REPAIRED  
ADJUSTED  
ALSO  
WHEEL ALIGNMENT  
BANKAMERICARD  
FREE ESTIMATES  
**422-4400**

**Bendix**  
  
**BOWLIN'S SAFETY SERVICE**  
850 BROADWAY • CHULA VISTA  
(LOCATED BETWEEN K & L STREET)

**WHEEL ALIGNMENT & BRAKE SERVICE**

HENDRICKSON SERVICE  
77 Broadway, Chula Vista ..... 422-0372  
(See our Ad. under Automobile—Repairs)

**WHOLESALEERS**

HOMER E. HAMILTON  
3410 F Ave., National City ..... 420-1008  
(See our Ad. under Meats — Wholesale)

**WIG STYLING**

BILLIE'S HAIR FASHIONS  
1148 Palm Ave., Imperial Beach ..... 424-9323  
(See our Ad. under Beauty Shops)

**FREQUENTLY USED TELEPHONE NUMBERS**



## This image shows a single sheet of white paper with horizontal ruling lines. The lines are evenly spaced and run across the width of the page. There is no handwriting or other markings on the paper.

## **FREQUENTLY USED TELEPHONE NUMBERS**

## This image shows a single sheet of white paper with horizontal blue or grey ruling lines. The lines are evenly spaced and run across the width of the page. There is no handwriting or printed text on the paper. A faint vertical crease or shadow is visible on the left side, suggesting it might be part of a bound notebook.



# NOTES

# NOTES



## ATTENTION



COMMANDING OFFICERS  
BASE INFORMATION OFFICERS  
Call Collect (714) 298-8351

For Information Regarding a Directory and Guide for your Installation

NAVAL TRAINING CENTER, SAN DIEGO • NAAS  
REAM FIELD, IMPERIAL BEACH • NAVAL  
WEAPONS STATION, CONCORD • NAVAL  
AMPHIBIOUS BASE, CORONADO • NAF EL CENTRO

Military Publishers of California

P.O. BOX 2428

SAN DIEGO, CALIFORNIA





